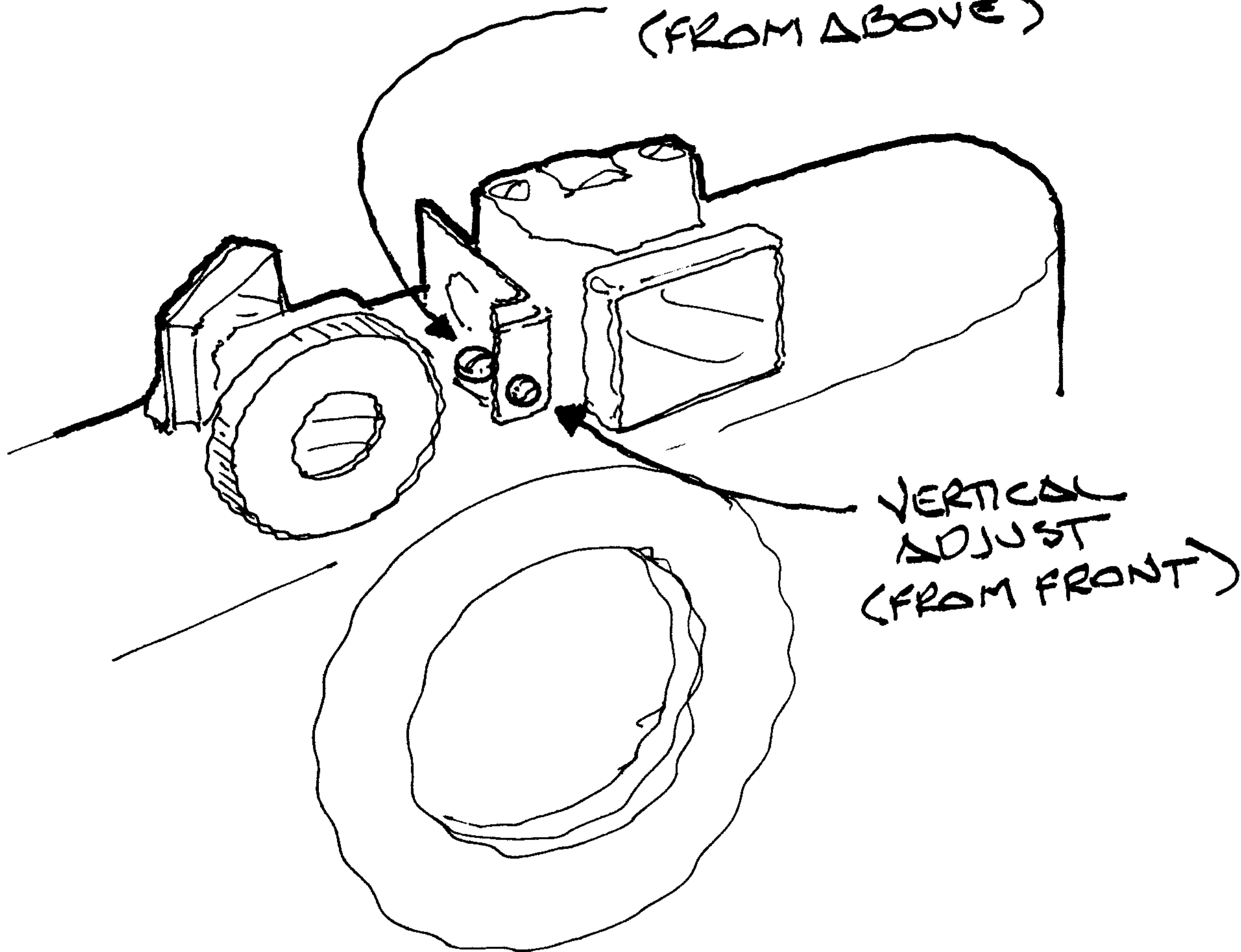


ARGUS C-4 RANGEFINDER

LATERAL ADJUST
(FROM ABOVE)

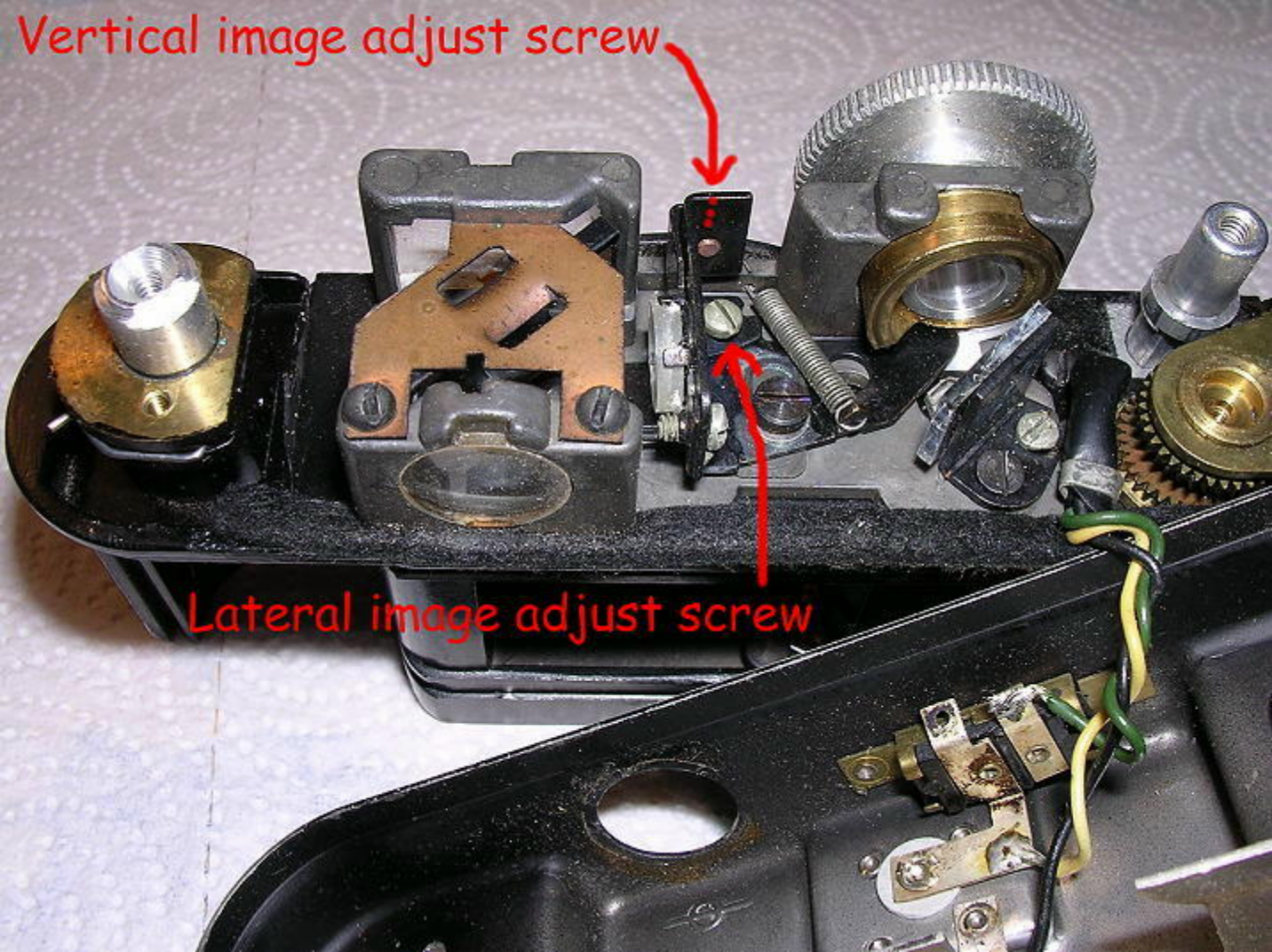


VERTICAL
ADJUST
(FROM FRONT)

Vertical image adjust screw

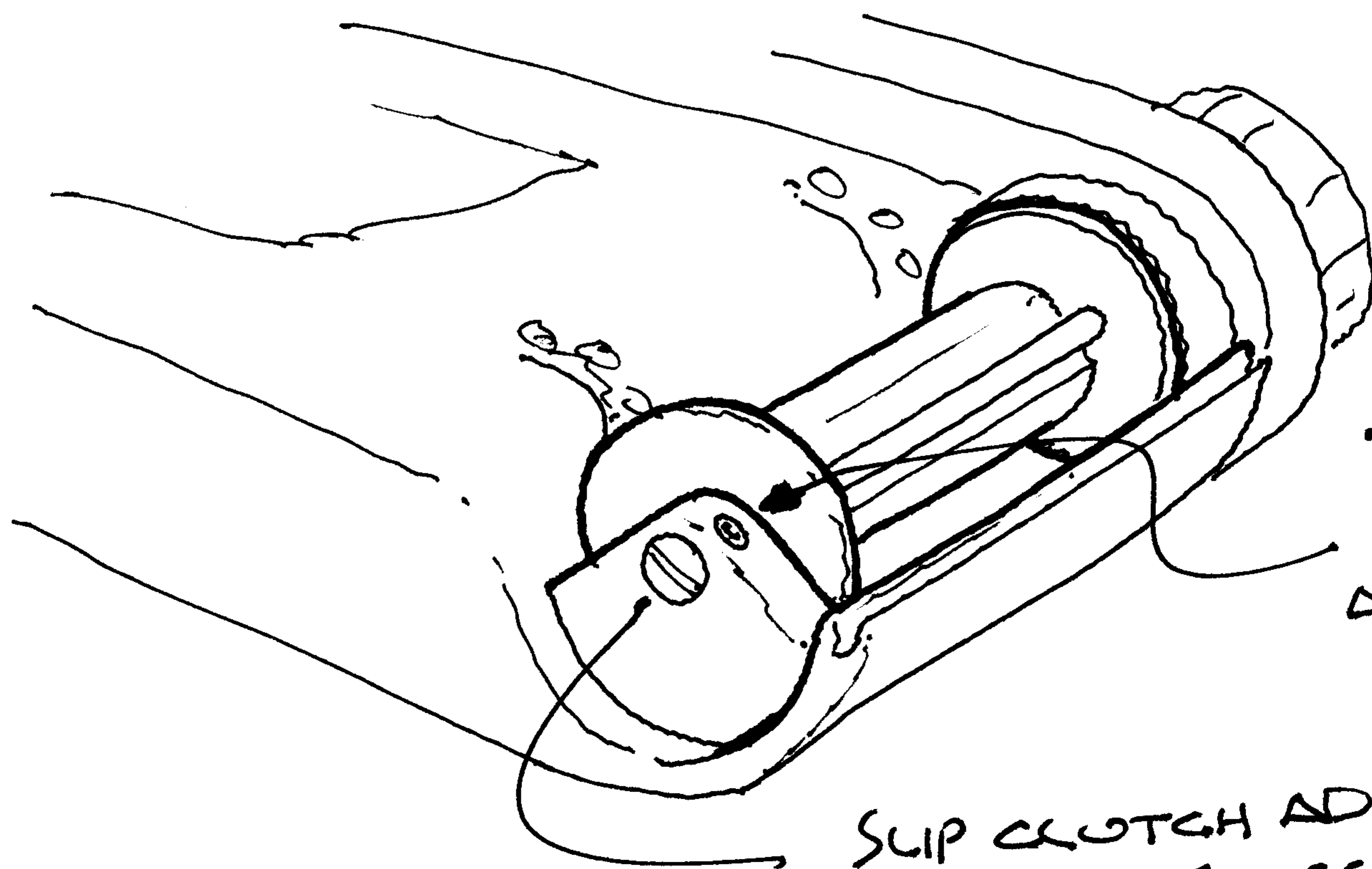


Lateral image adjust screw



ARGUS C4
TAKEUP SPPOOL SLIP
CLUTCH ADJUST

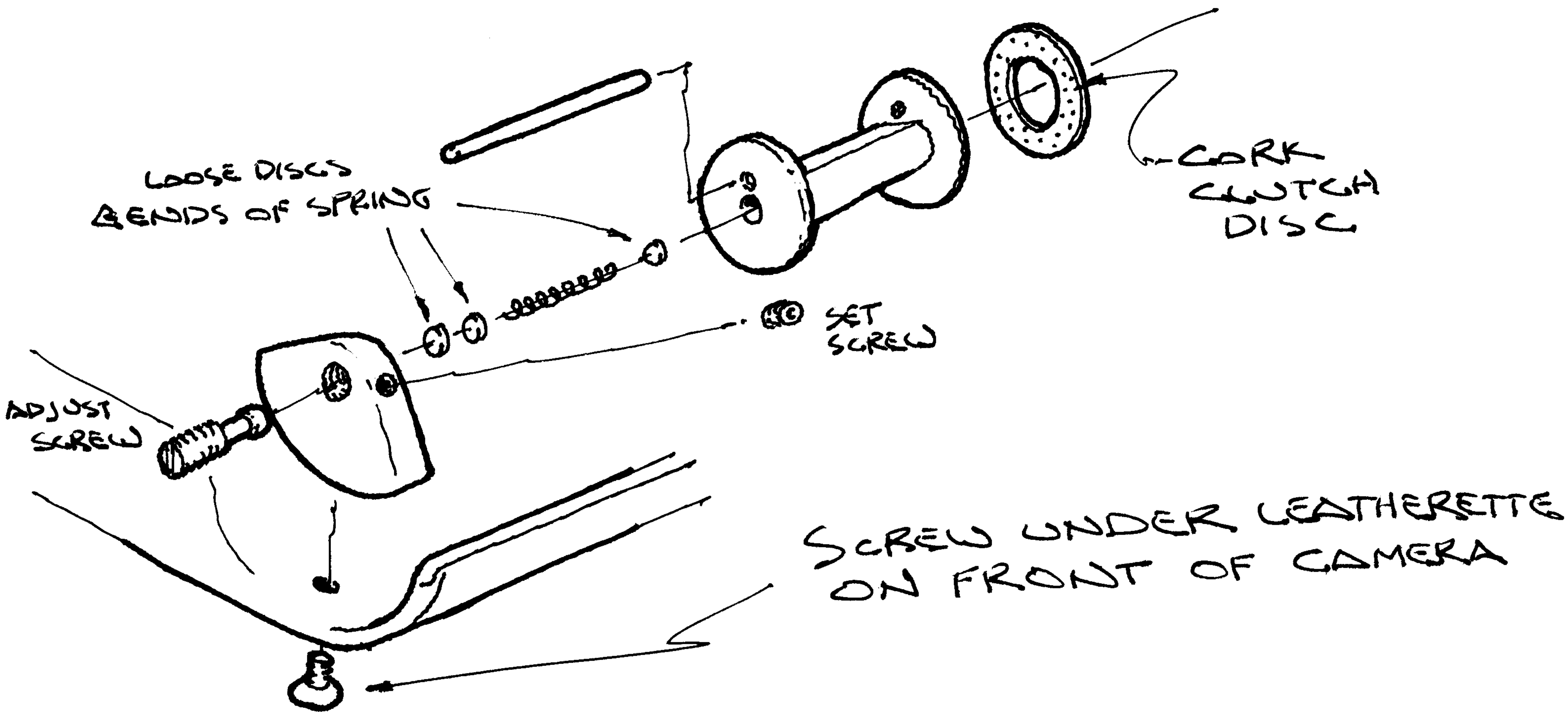
11.27.15



.050" ALLEN
SET SCREW
LOCKS
ADJUST SCREW

SLIP CLUTCH ADJUST SCREW:
CW = STIFFER, CCW = SOFTER

- DISASSEMBLY -



LOOSE DISCS
BENDS OF SPRING

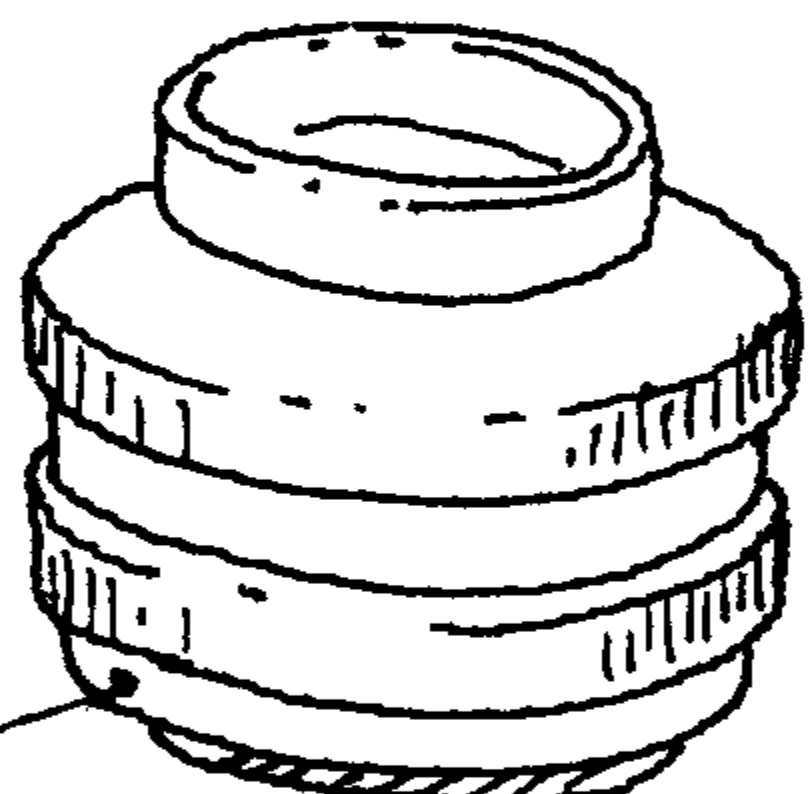
CORK
CLUTCH
DISC

SET
SCREW

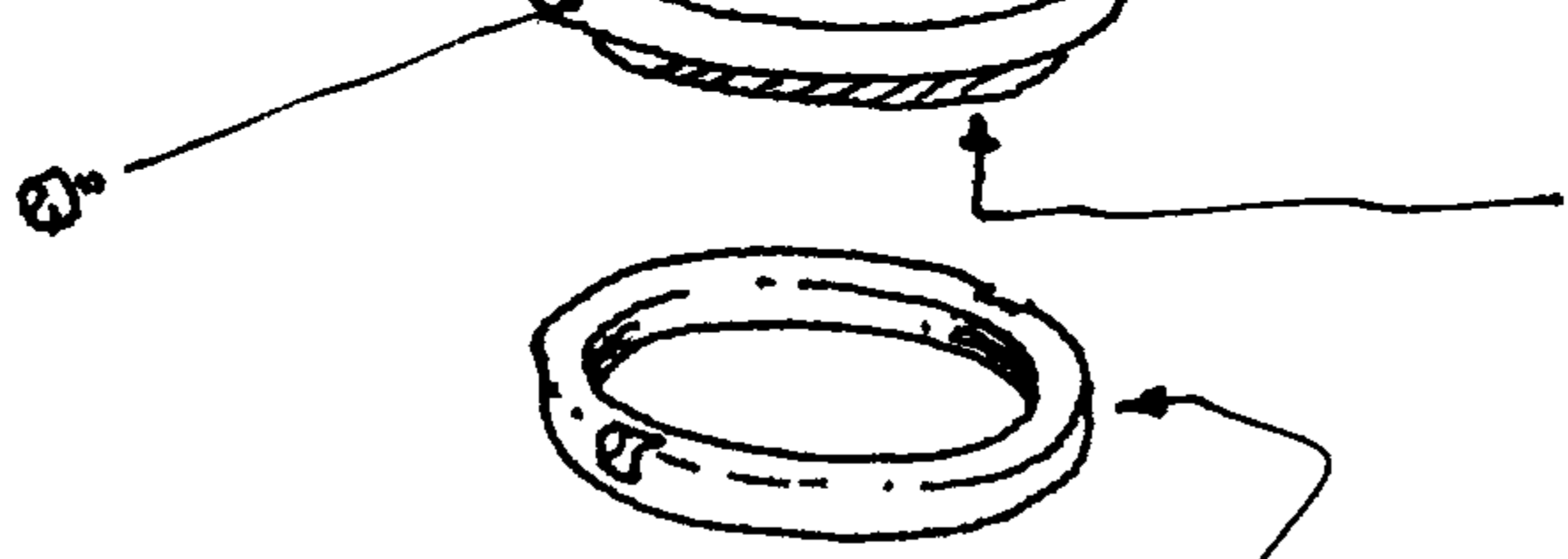
ADJUST
SCREW

SCREW UNDER LEATHERETTE
ON FRONT OF CAMERA

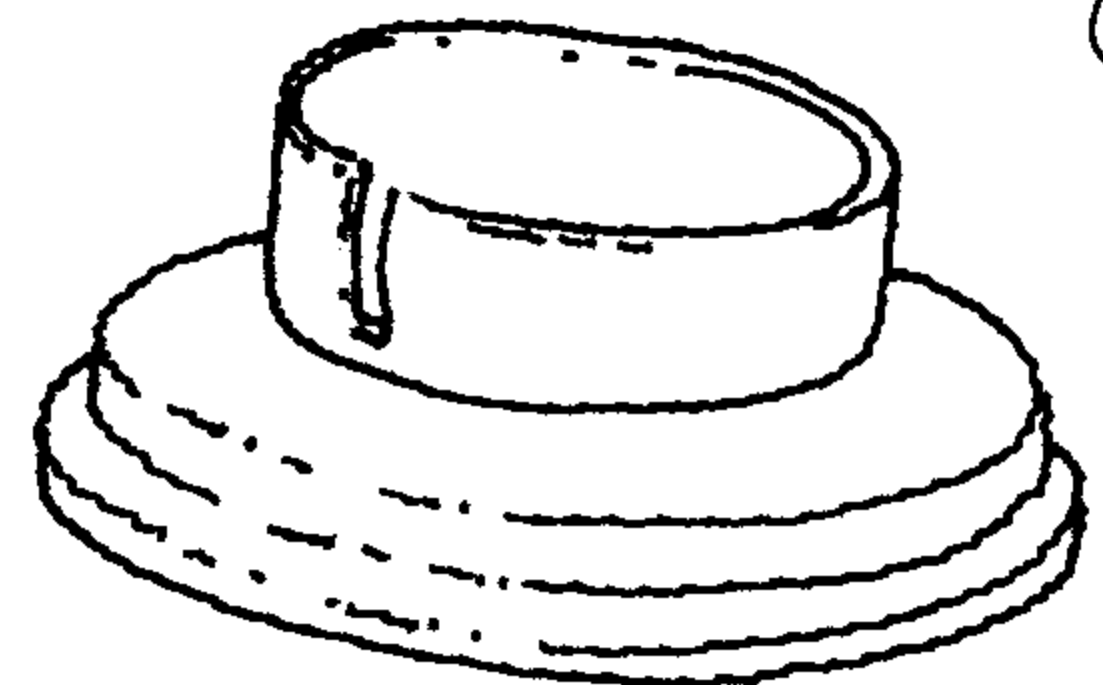
ARGUS C. 4
1.27.2003



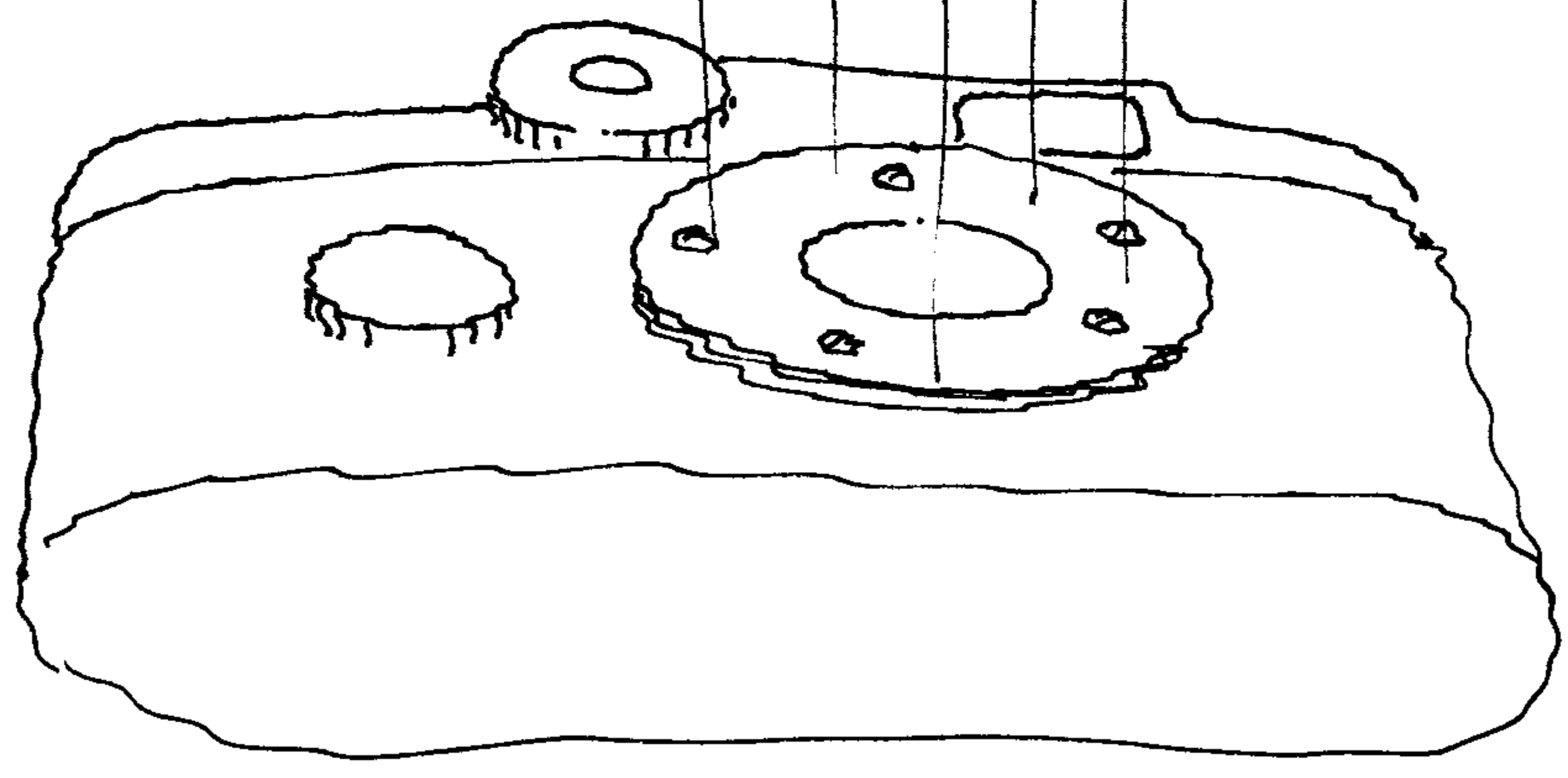
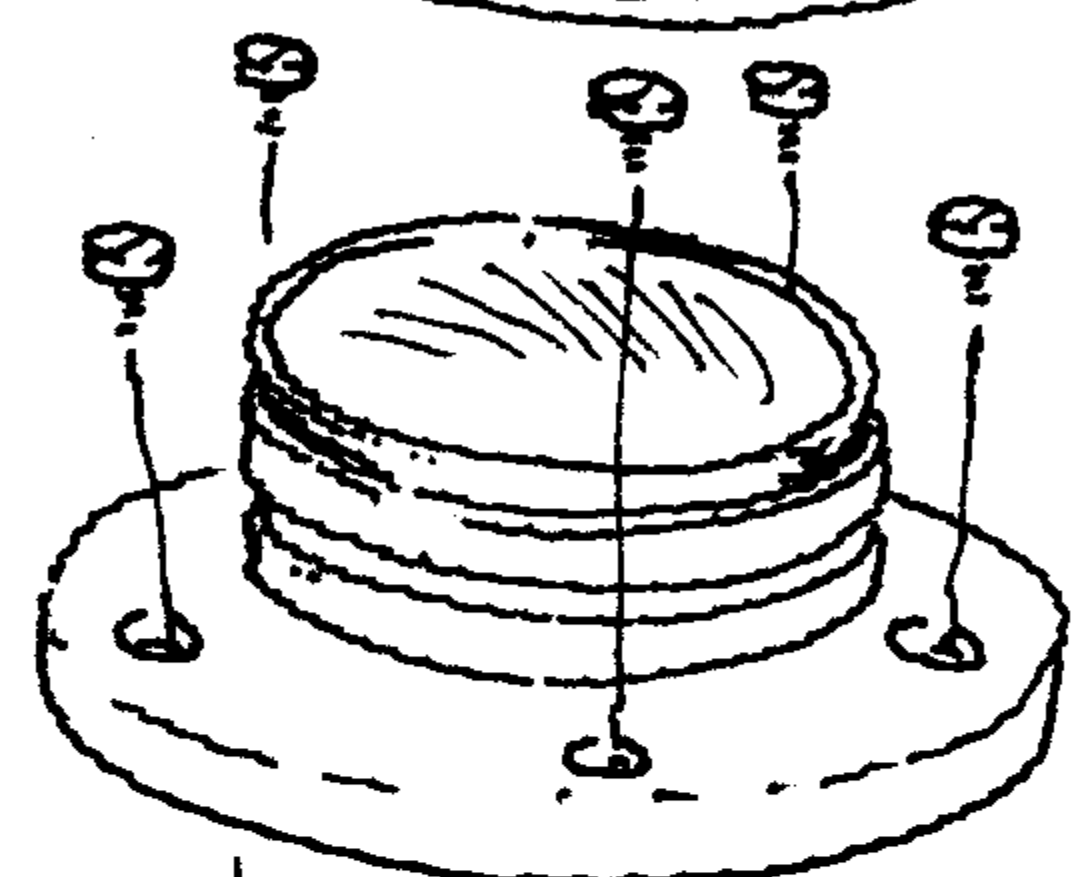
← NOTE ORIENTATION
BEFORE REMOVING.
- RH MULTI-LEAD HELICAL



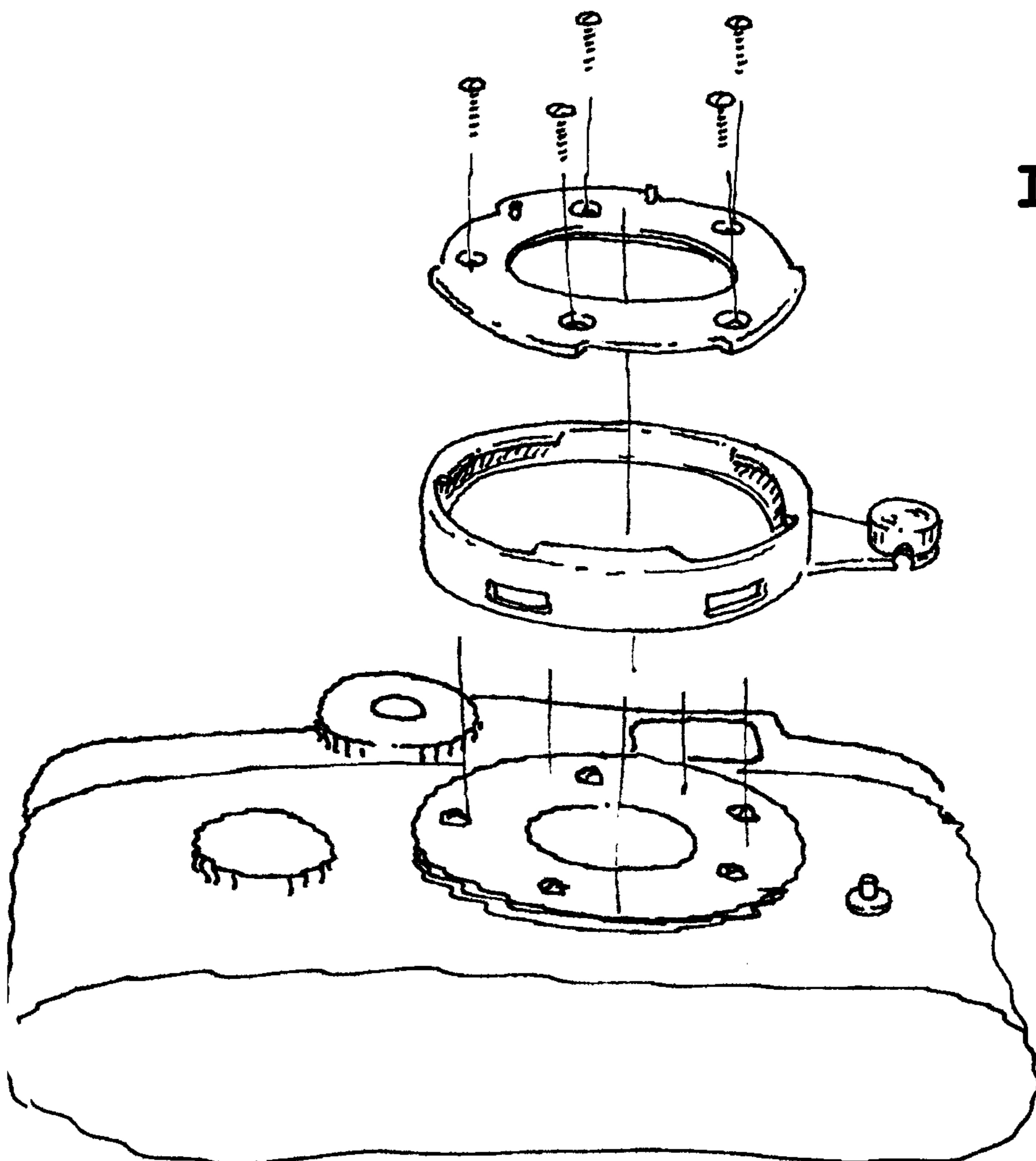
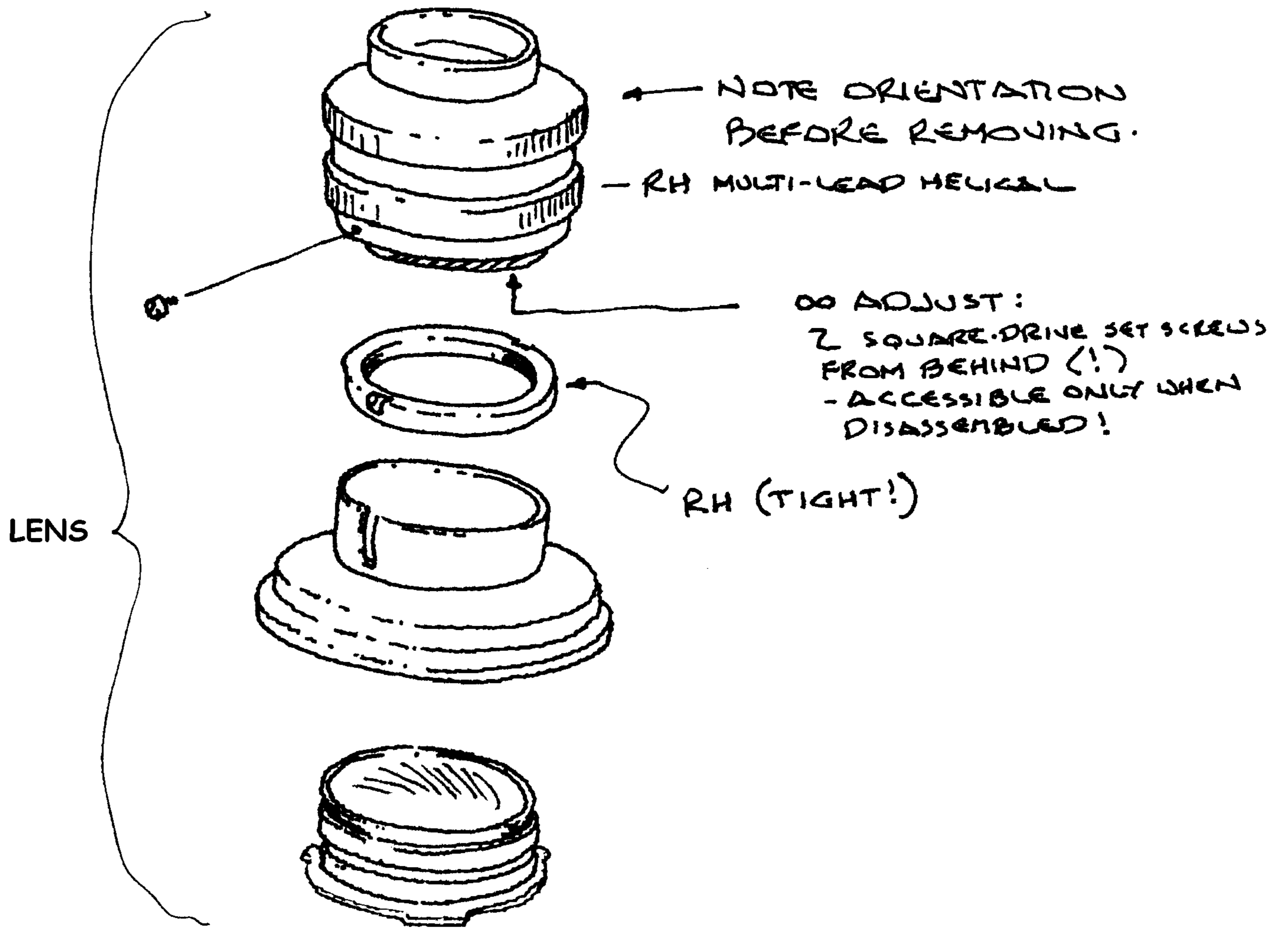
DO ADJUST:
2 SQUARE-DRIVE SET SCREWS
FROM BEHIND (!)
- ACCESSIBLE ONLY WHEN
DISASSEMBLED!



RH (TIGHT!)

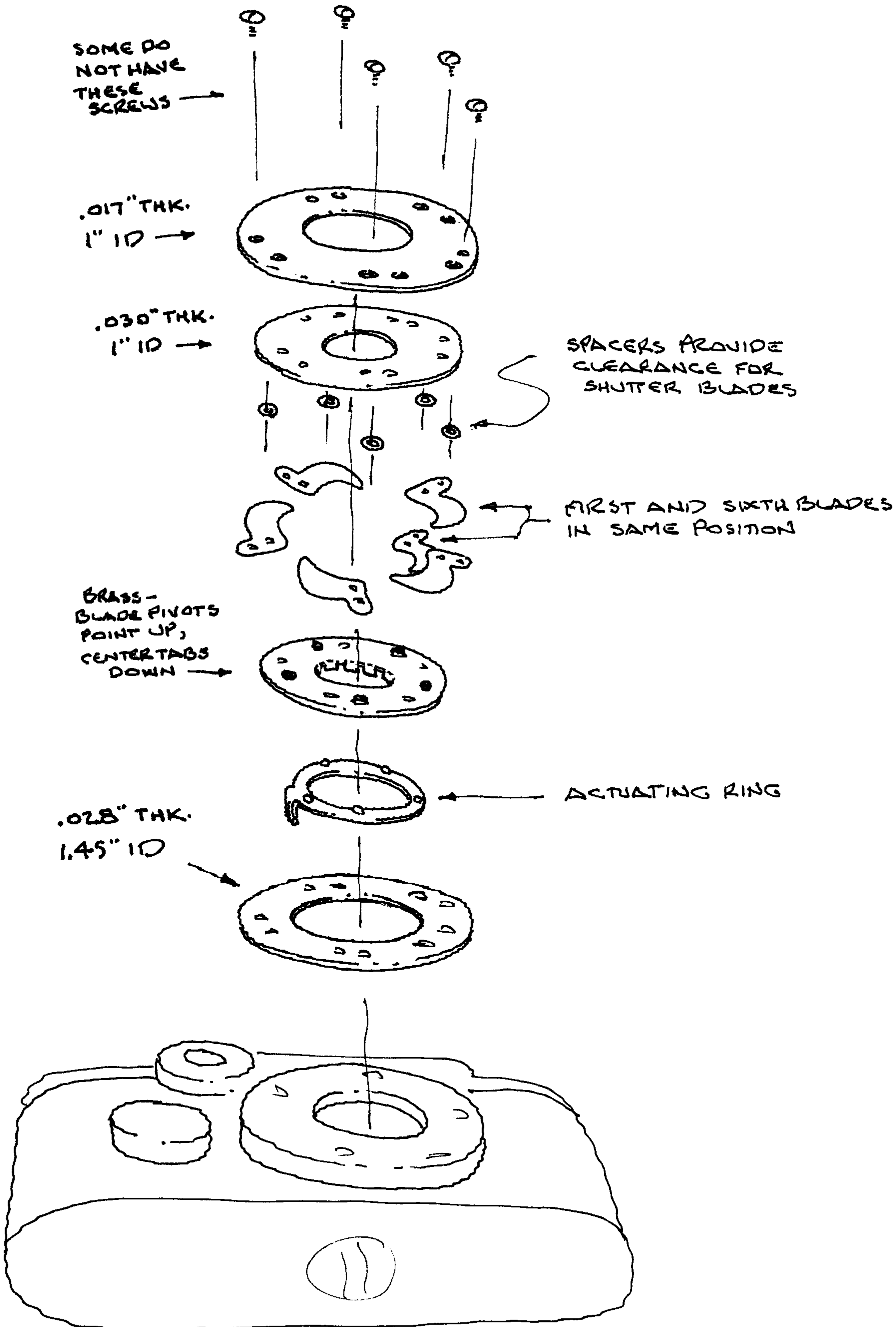


ARGUS C. 4
1.27.2003

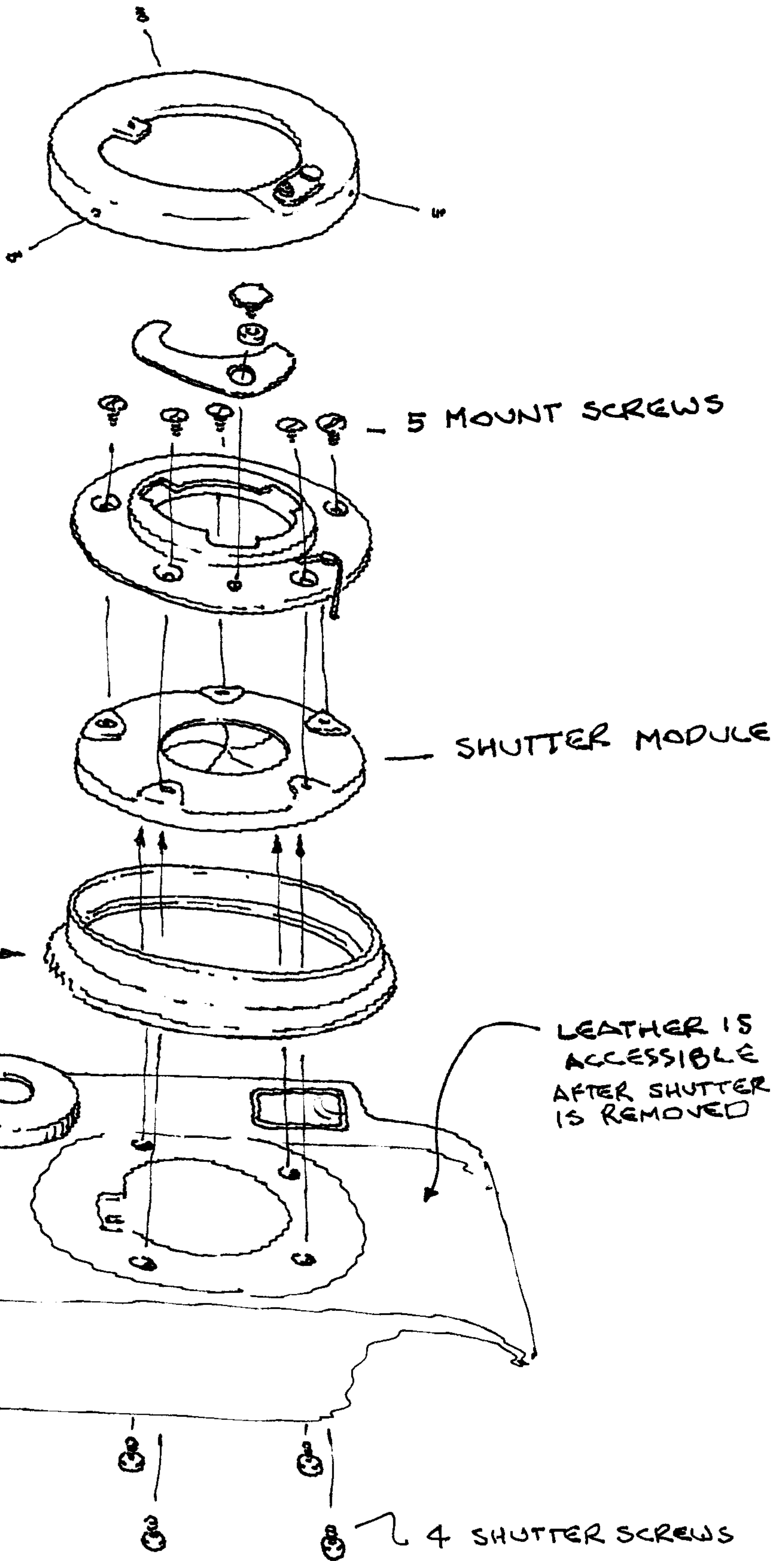


GEISS INTERCHANGEABLE LENS MOUNT

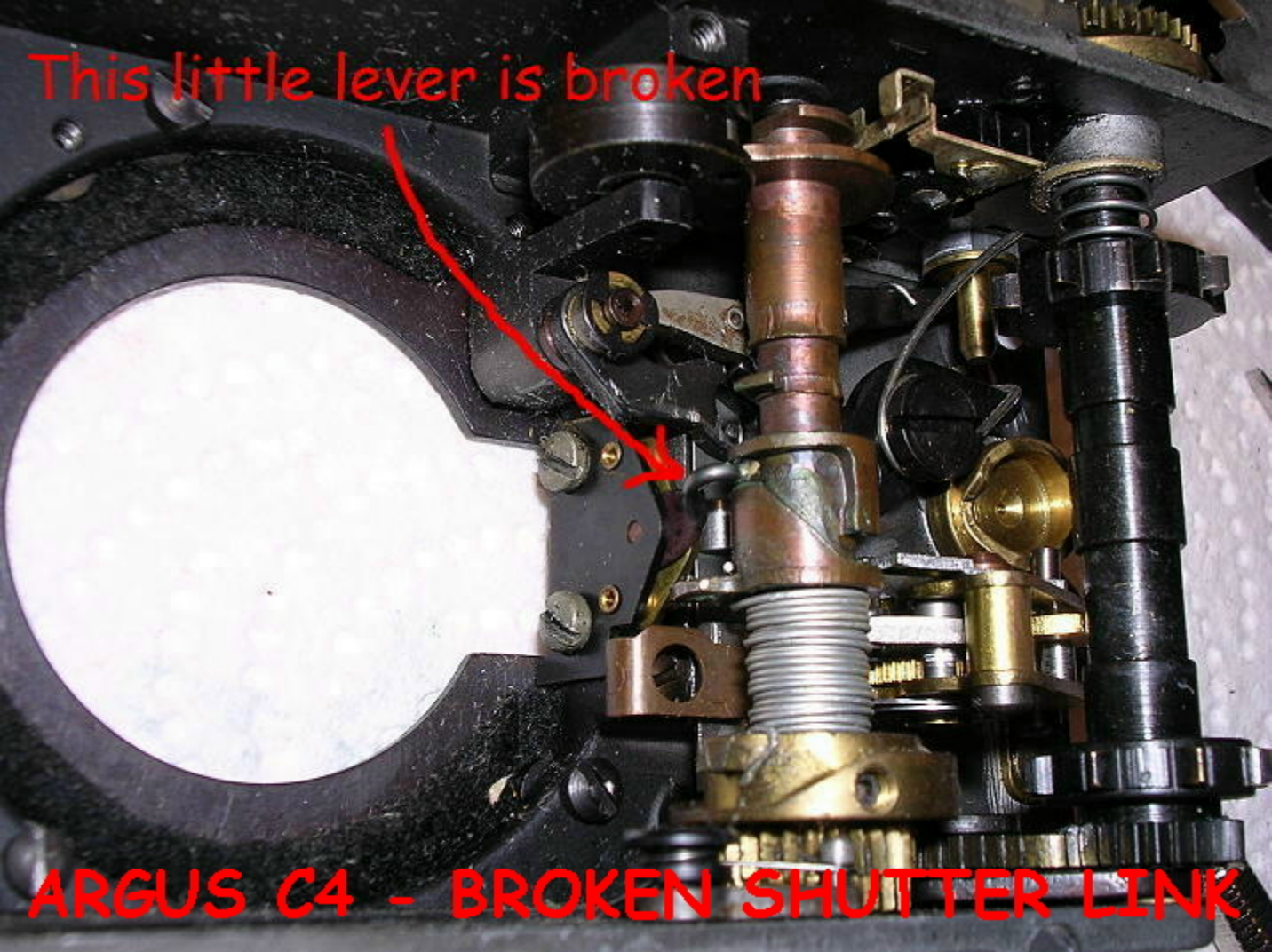
ARGUS C.4 SHUTTER BLADE ASSY



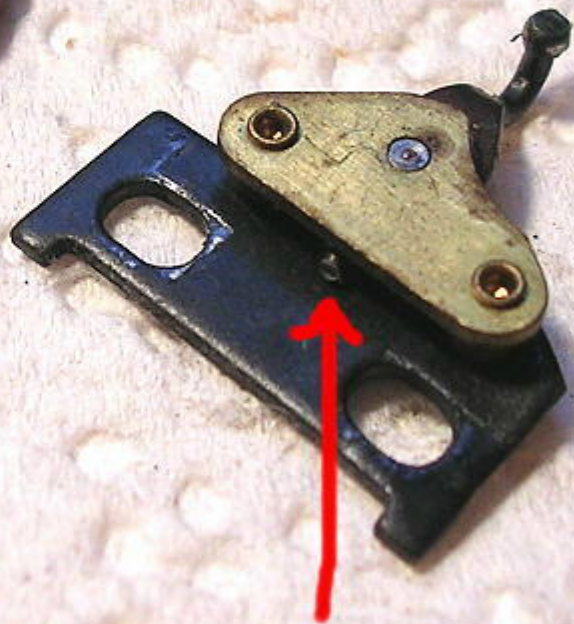
C-44 LENS MOUNT



This little lever is broken



ARGUS C4 - BROKEN SHUTTER LINK

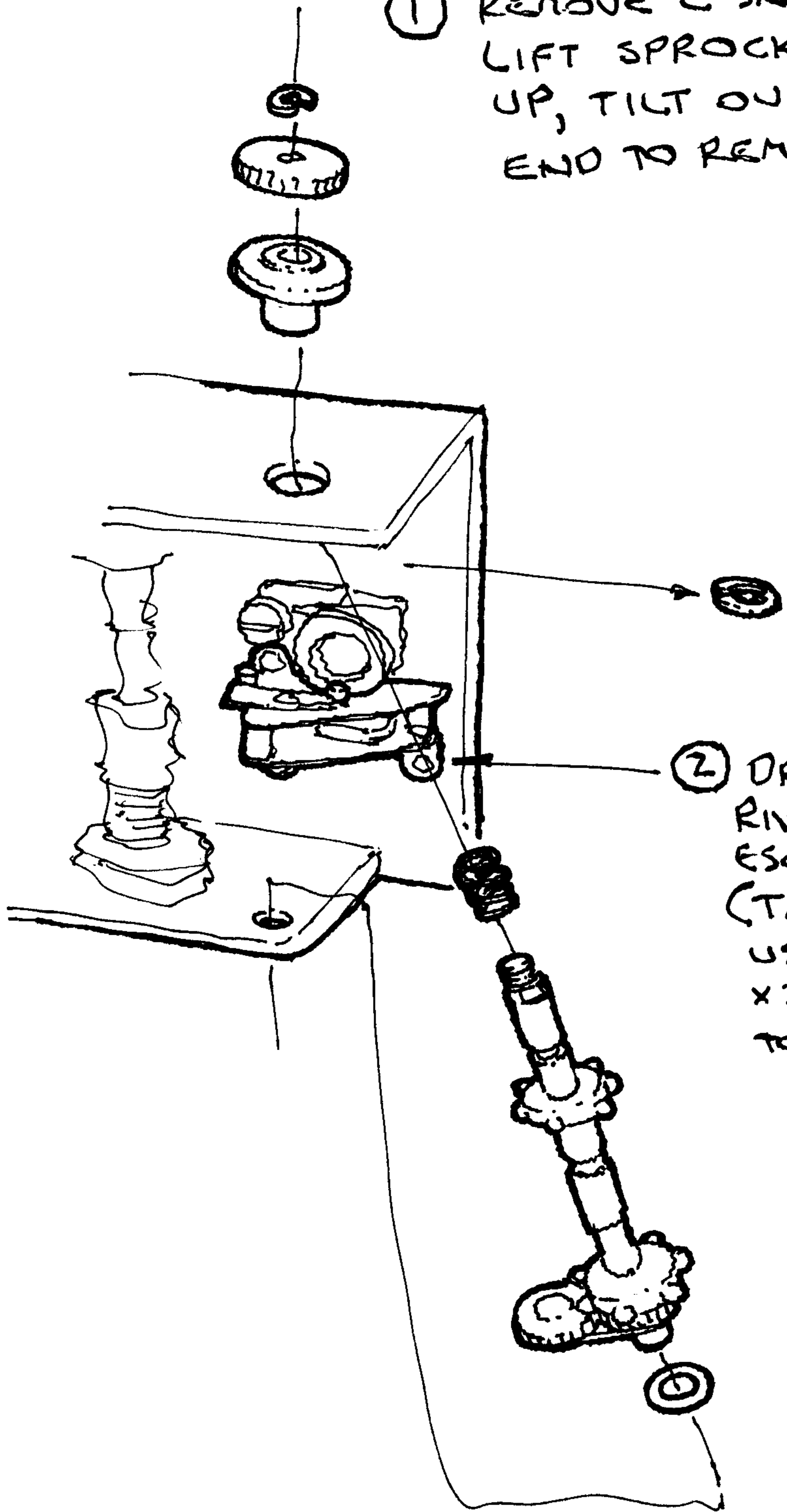


Broken lever

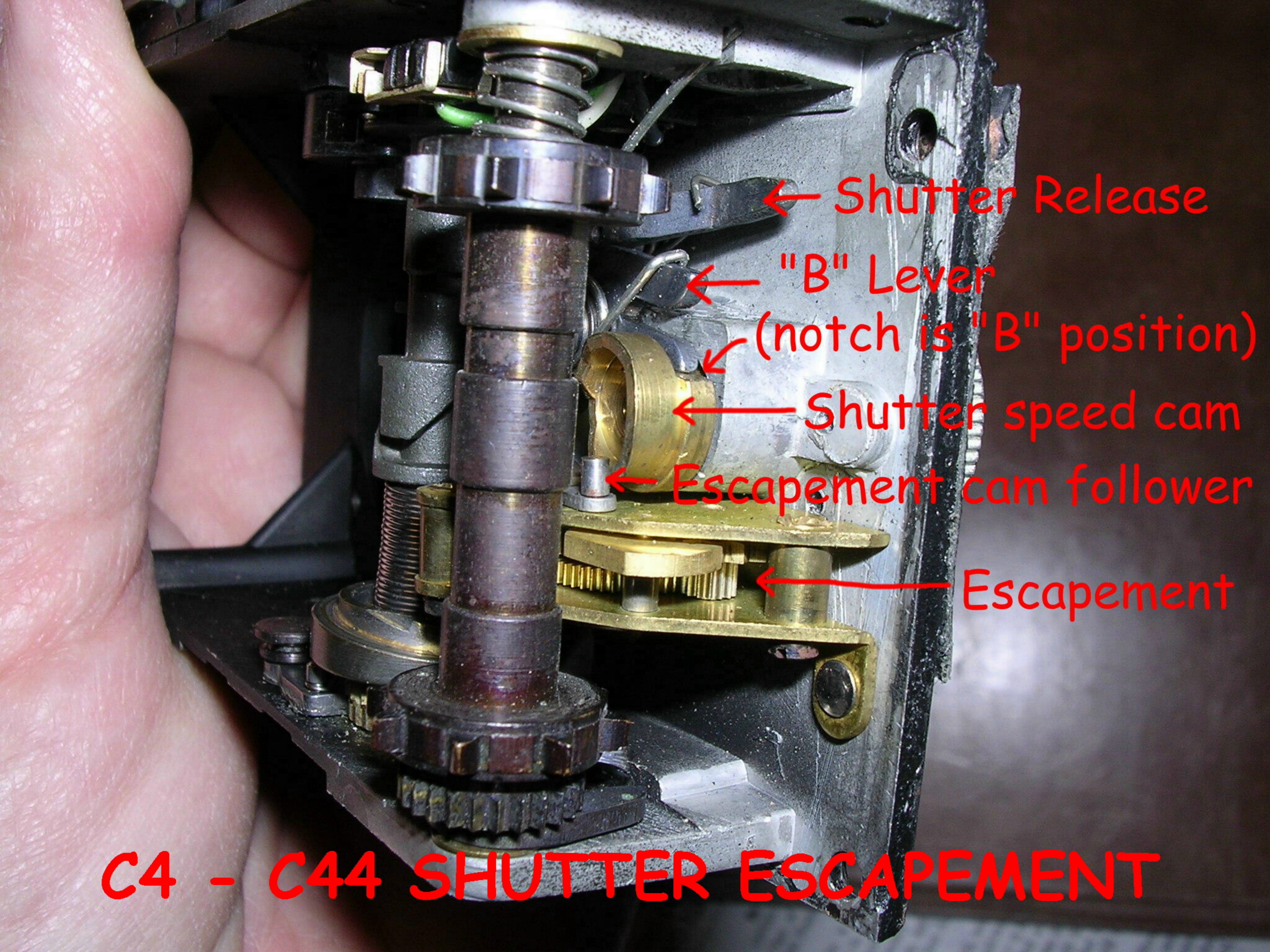
ARGUS C44 ESCAPEMENT

8.29.05

① REMOVE 2 SNAP RINGS &
LIFT SPROCKET SHAFT
UP, TILT OUT BOTTOM
END TO REMOVE



② DRILL OUT 3
RIVETS TO REMOVE
ESCAPEMENT.
(TAP CASTING &
USE M1.7 OR M2.0
X 3MM SCREWS
TO REINSTALL)



← Shutter Release

← "B" Lever

(notch is "B" position)

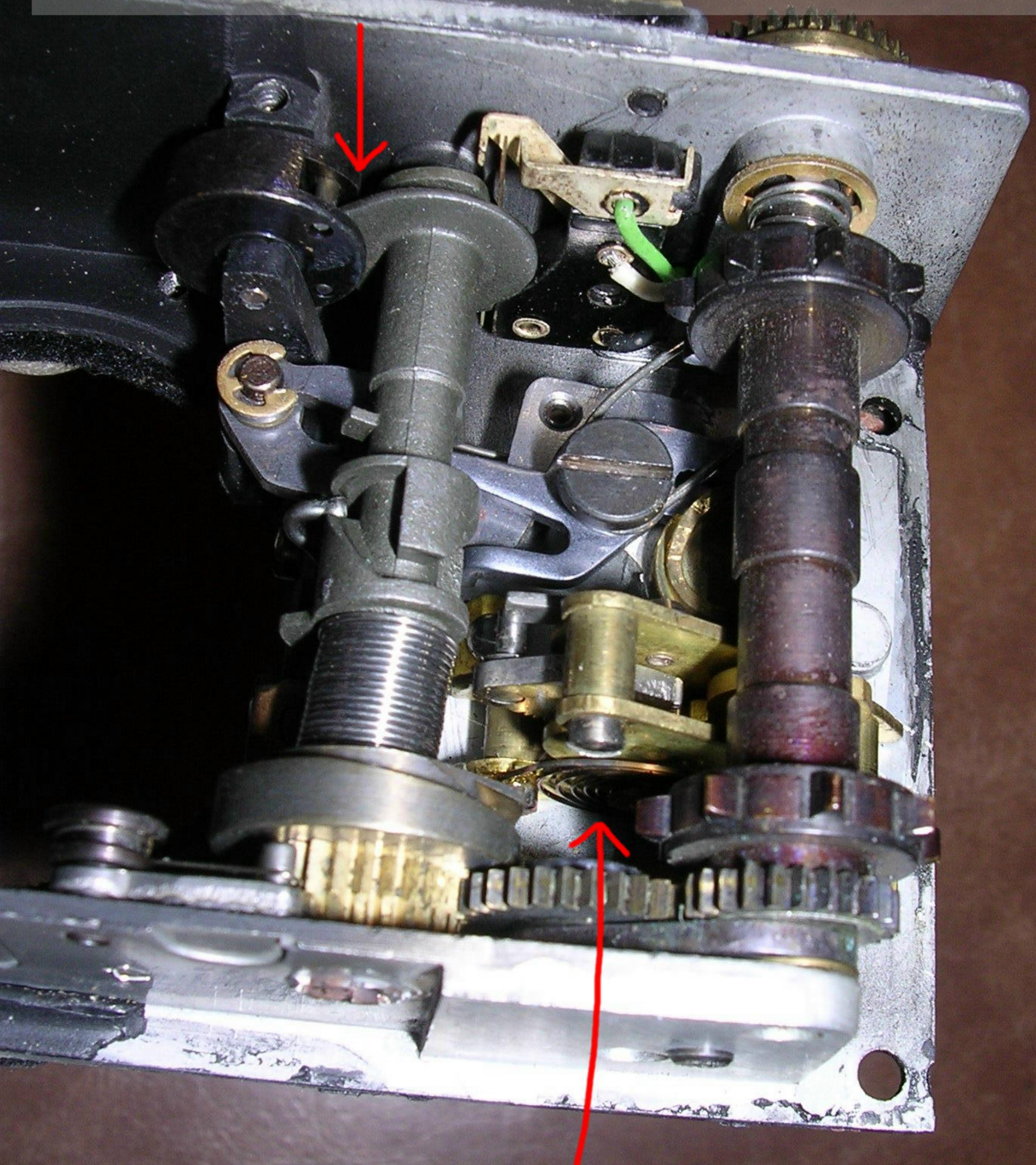
← Shutter speed cam

← Escapement cam follower

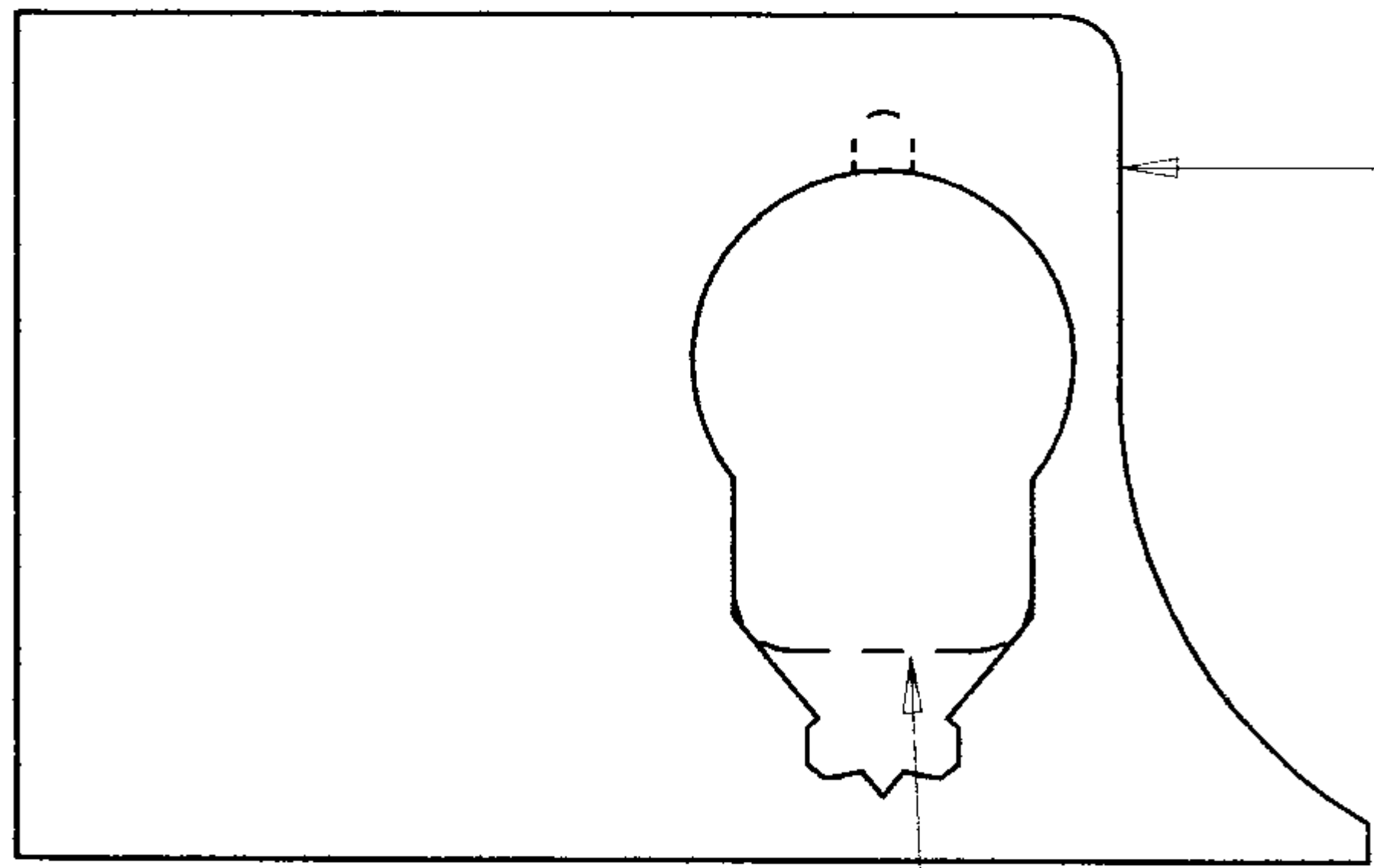
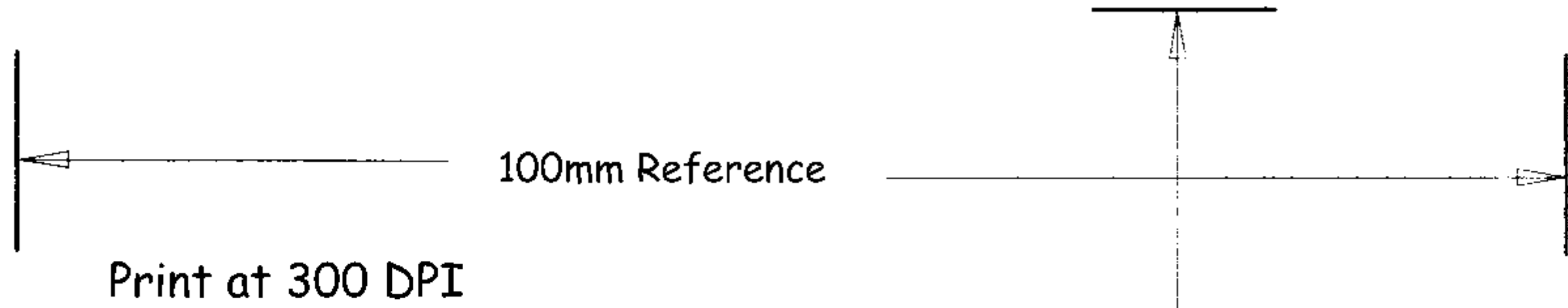
← Escapement

C4 - C44 SHUTTER ESCAPEMENT

This is a second escapement
to damp velocity at 1/300 second



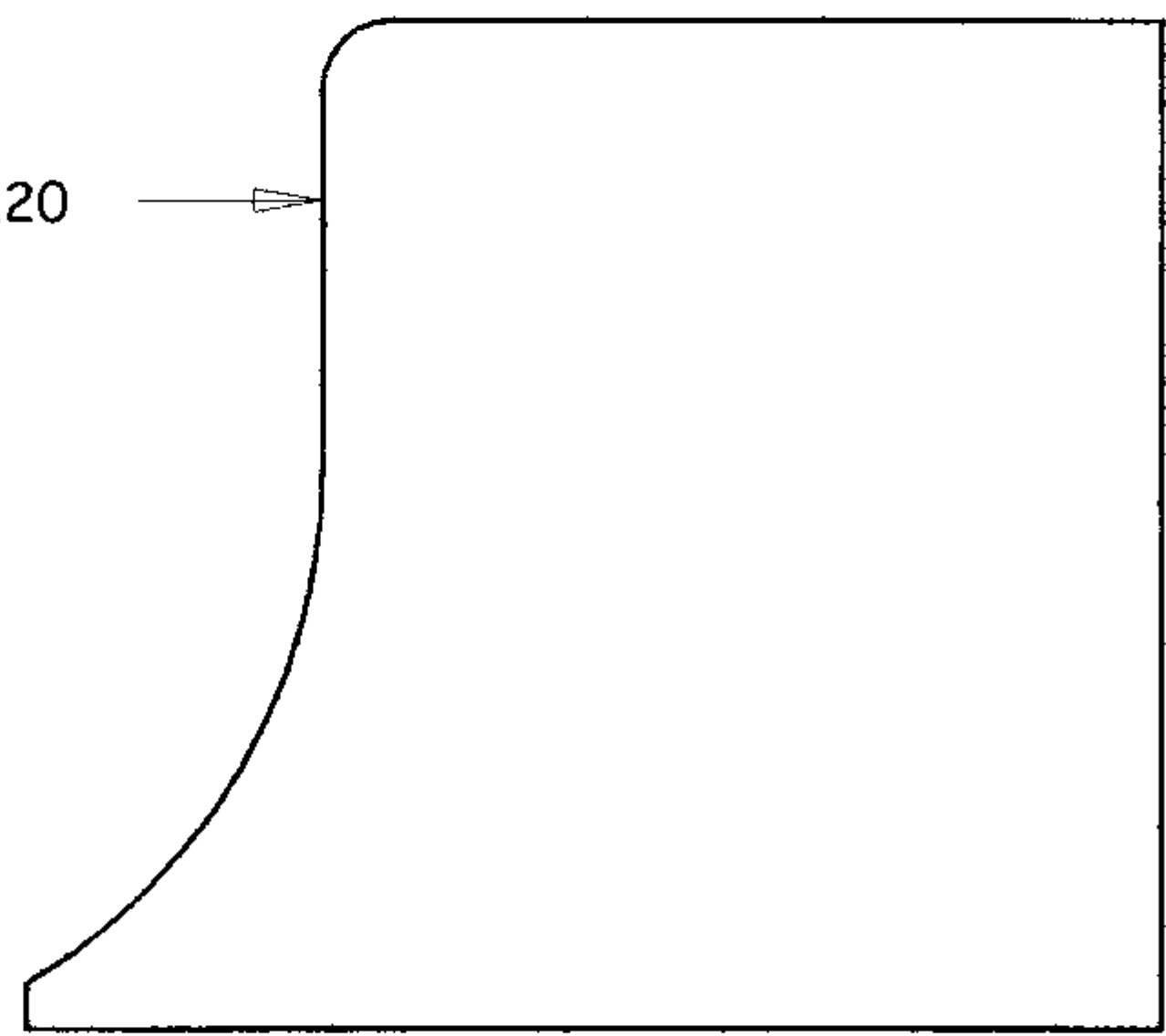
Escapement hair spring



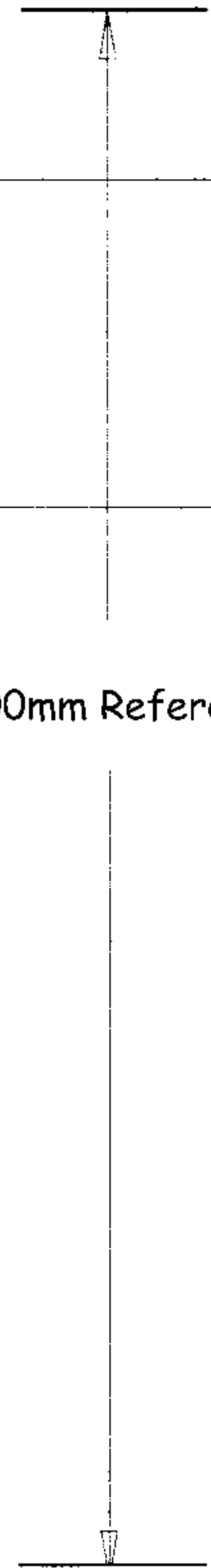
C44 Option Shown Dashed

100mm Reference

2.20



Argus C4 Front
Print at 300DPI



and early (4)

100mm Reference

Print at 300 DPI

