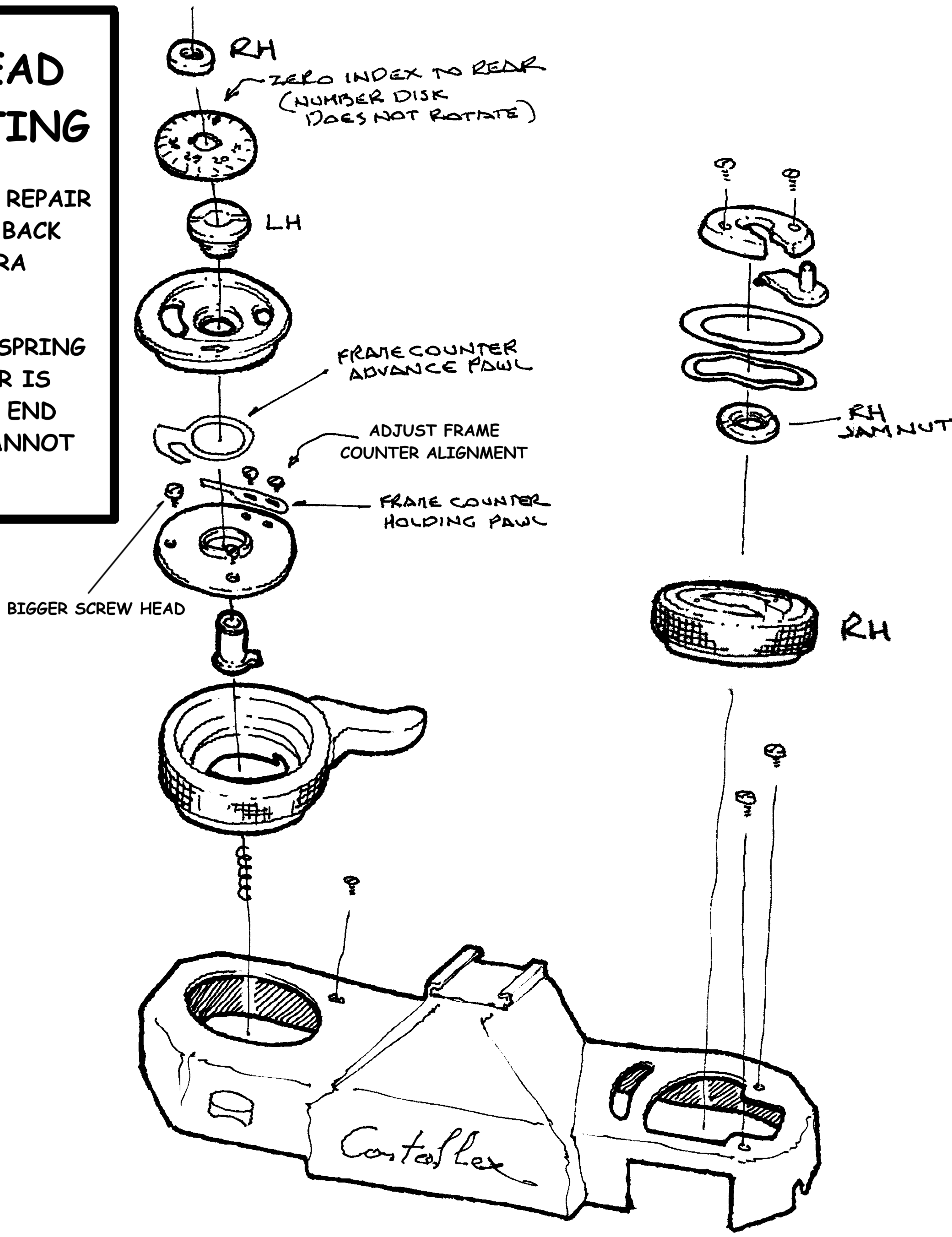


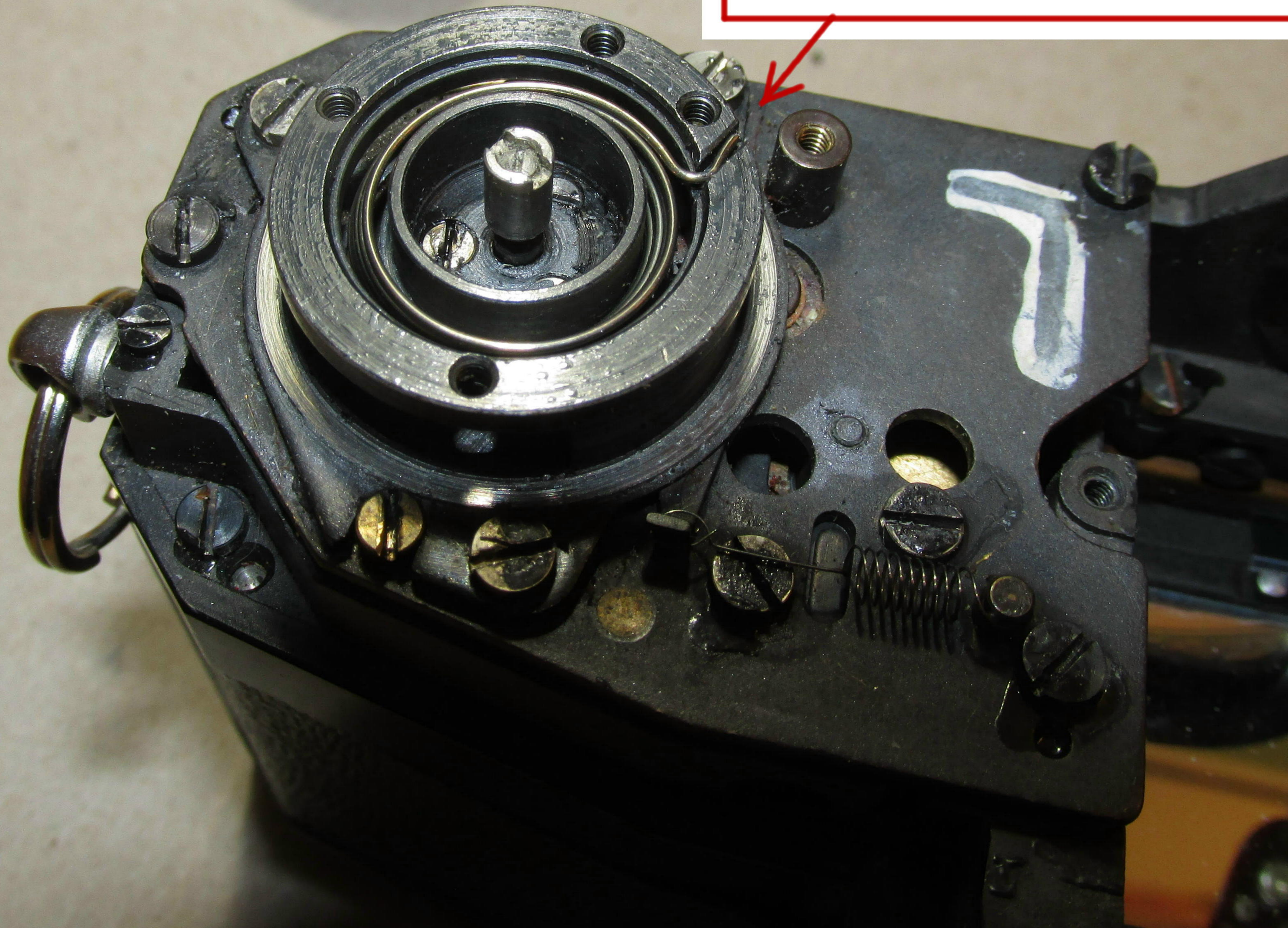
**WARNING! READ BEFORE STARTING**

1. DO NOT ATTEMPT ANY REPAIR WITH FILM MAGAZINE BACK ATTACHED TO CAMERA
2. WIND LEVER RETURN SPRING IS LOOSE WHEN LEVER IS REMOVED. IF BOTTOM END DETACHES, SHUTTER CANNOT BE WOUND



**WARNING:**

**THIS SPRING ANCHOR IS LOOSE  
WHEN BRASS COVER PLATE IS REMOVED.  
REPLACE WIND LEVER AND COVER PLATE  
TO HOLD SPRING IN PLACE  
DURING HANDLING**



**IF SPRING COMES LOOSE, RETENSION AND SECURE IT  
IMMEDIATELY TO AVOID DETACHMENT OF BOTTOM ANCHOR:  
TENSION ONE FULL TURN FROM REST POSITION  
(CROCHET HOOK IS A USEFUL TOOL)**

# WIND LEVER RETURN SPRING DETAILS

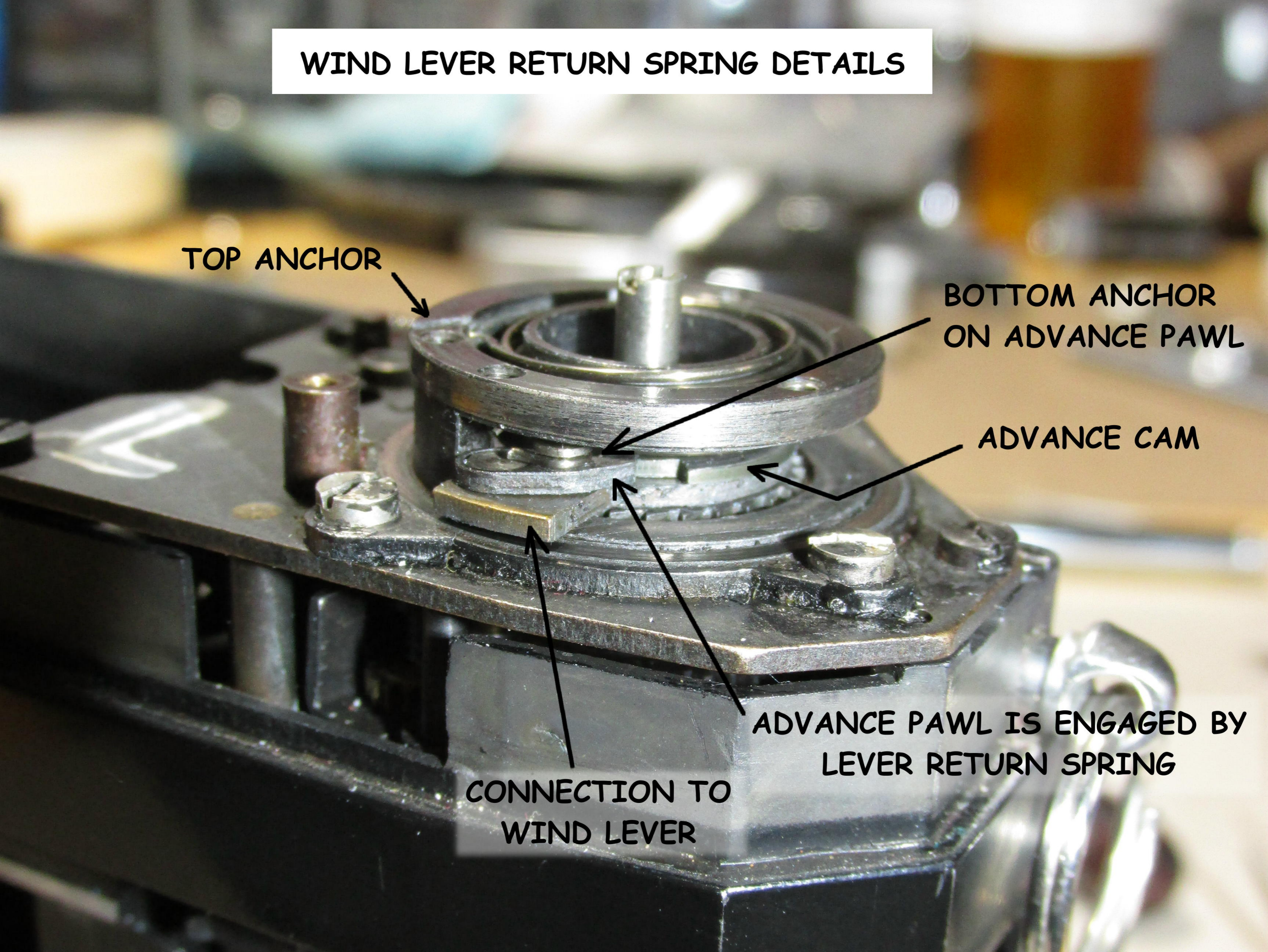
TOP ANCHOR

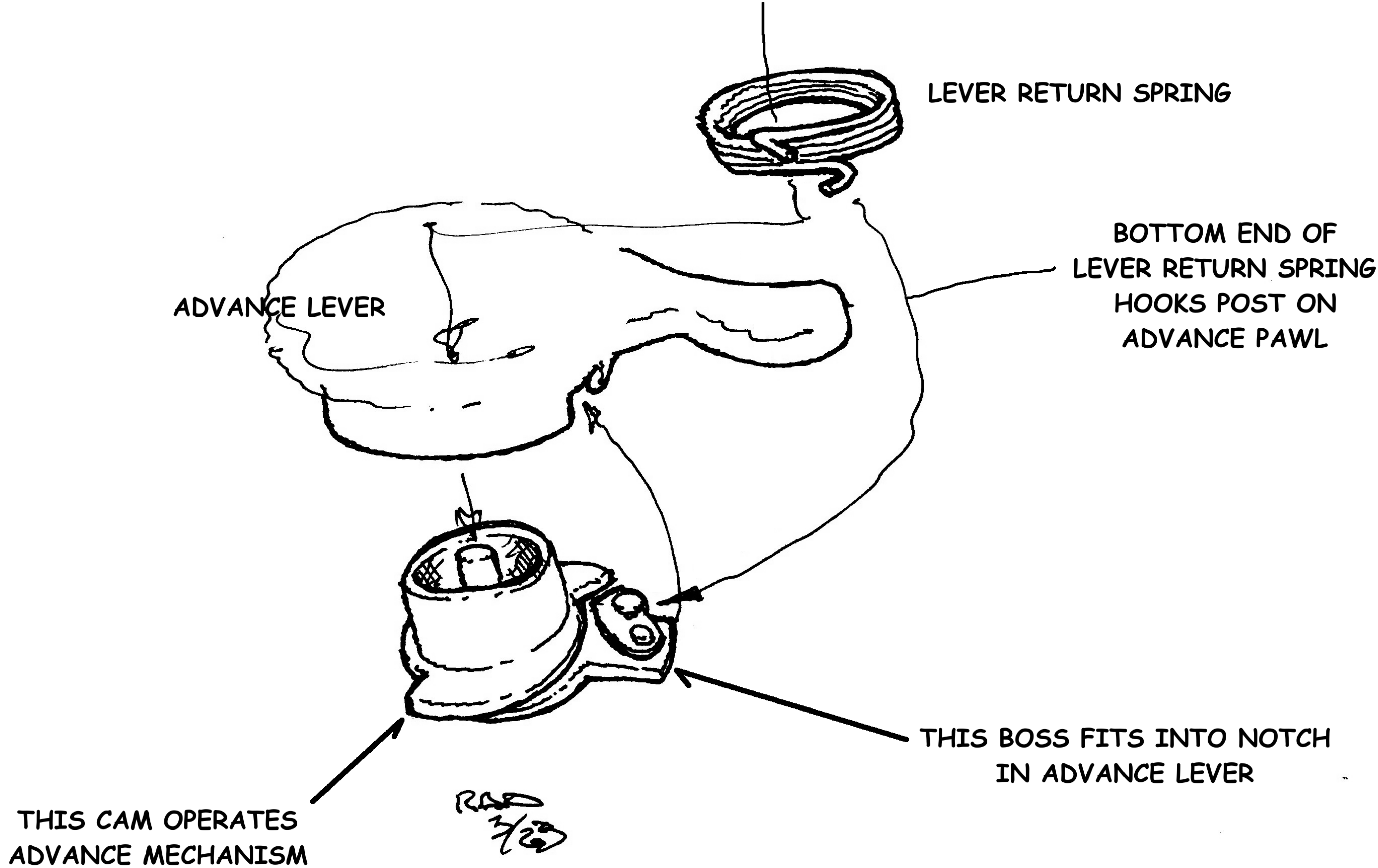
BOTTOM ANCHOR  
ON ADVANCE PAWL

ADVANCE CAM

ADVANCE PAWL IS ENGAGED BY  
LEVER RETURN SPRING

CONNECTION TO  
WIND LEVER





LEVER CONNECTS TO ADVANCE MECHANISM  
 VIA PAWL, WHICH IS ENGAGED BY  
 LEVER RETURN SPRING.  
IF SPRING IS DETACHED, SHUTTER CANNOT BE WOUND.

**CONTAFLEX ADVANCE LEVER DETAIL**

**NOTE:**  
TO REINSTALL WIND MODULE  
- REMOVE SHUTTER  
- INSTALL WIND MODULE  
- CONFIRM WIND/RELEASE FUNCTIONS  
- REINSTALL SHUTTER

**WIND LEVER RETURN SPRING**

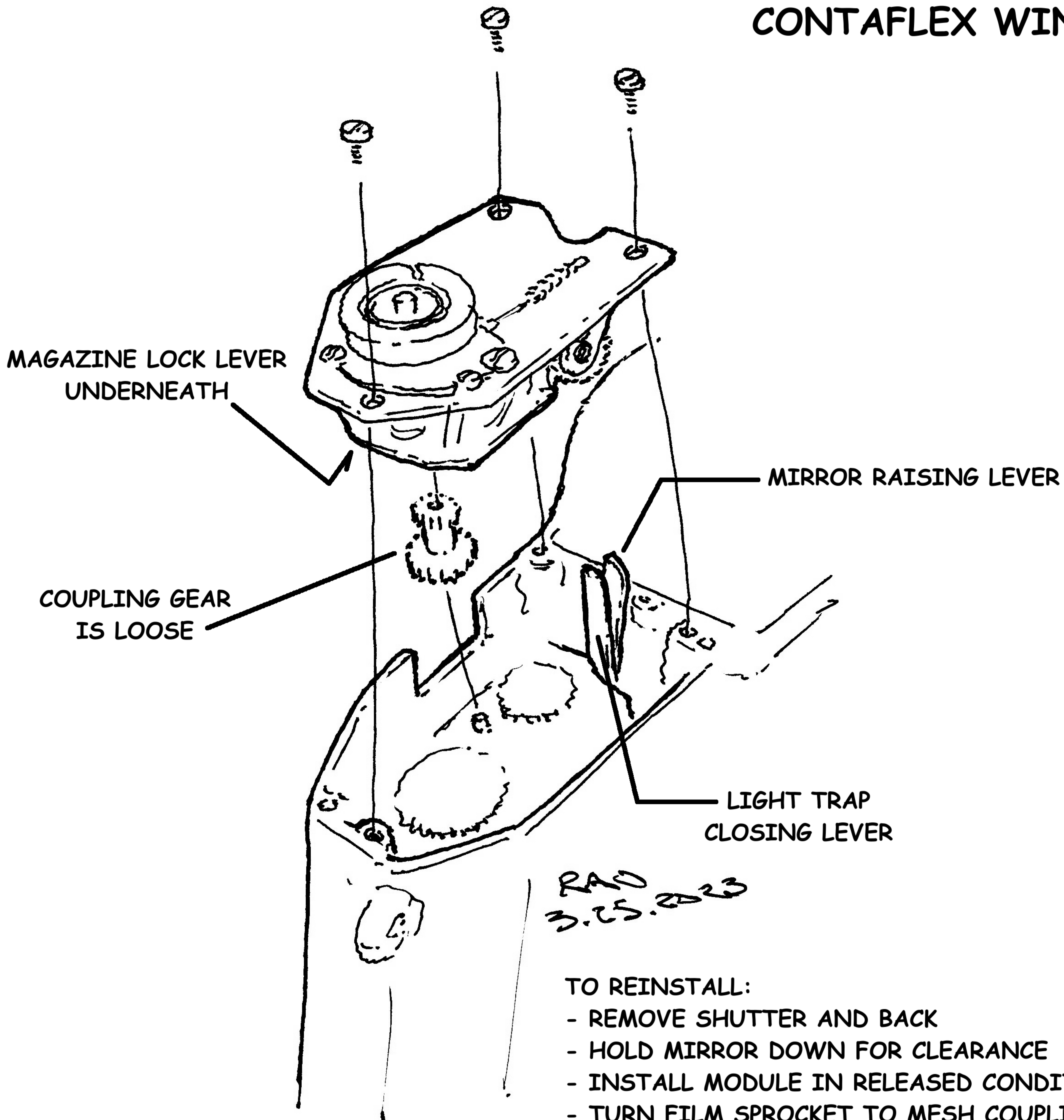
**THIS MODULE CONTROLS  
WIND, MIRROR AND RELEASE**

**SHUTTER COCKING GEAR**

**COUPLING GEAR IS LOOSE:  
INSERT IN WIND MODULE FOR REASSY.  
TURN FILM SPROCKET TO MESH GEARS**



# CONTAFLEX WIND MODULE



## TO REINSTALL:

- REMOVE SHUTTER AND BACK
- HOLD MIRROR DOWN FOR CLEARANCE
- INSTALL MODULE IN RELEASED CONDITION
- TURN FILM SPROCKET TO MESH COUPLING GEAR
- INSTALL SCREWS WHEN MODULE IS FULLY IN PLACE
- REINSTALL SHUTTER

SETTING LEVERS FOR  
MIRROR AND LIGHT TRAP

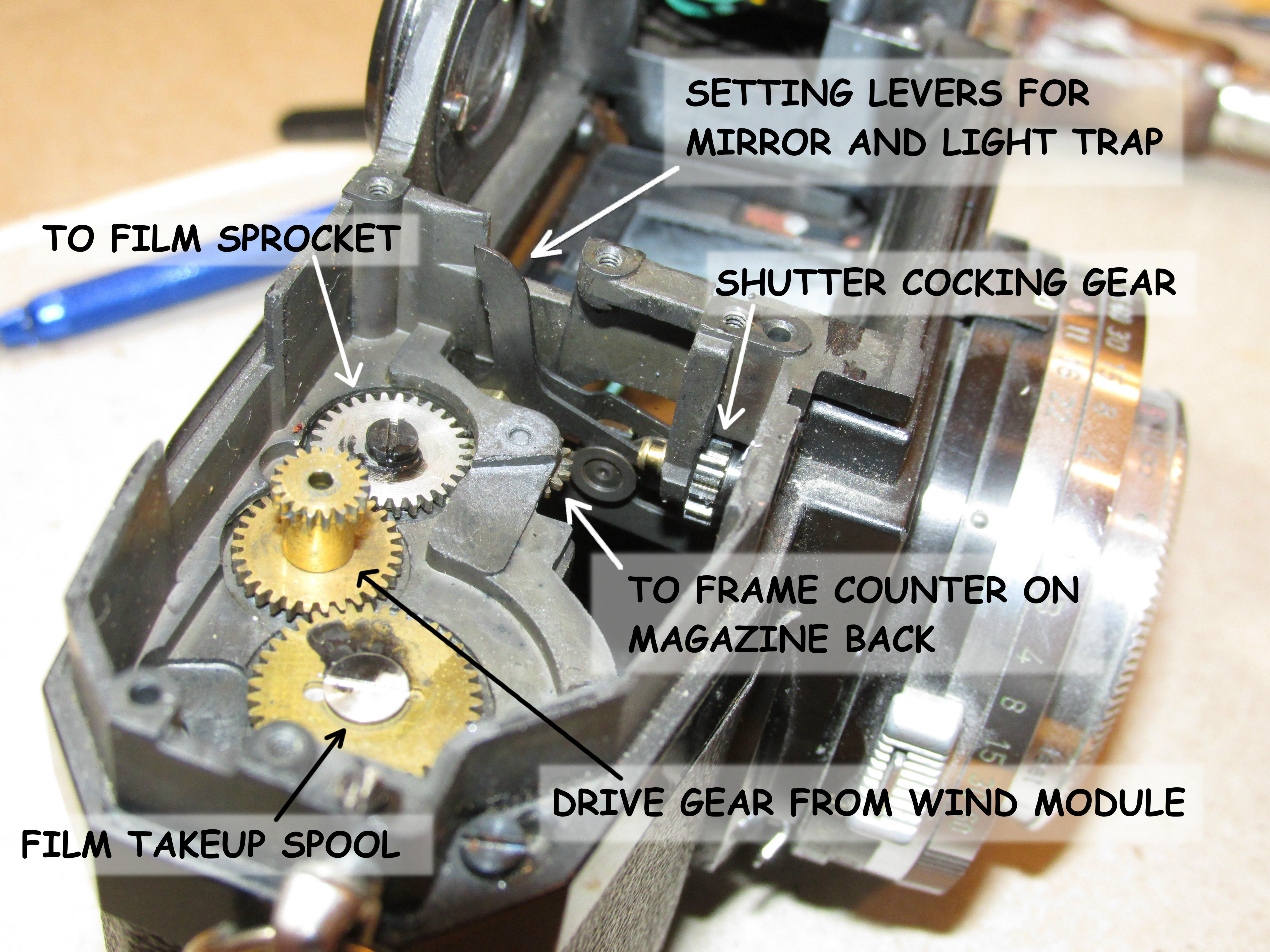
TO FILM SPROCKET

SHUTTER COCKING GEAR

TO FRAME COUNTER ON  
MAGAZINE BACK

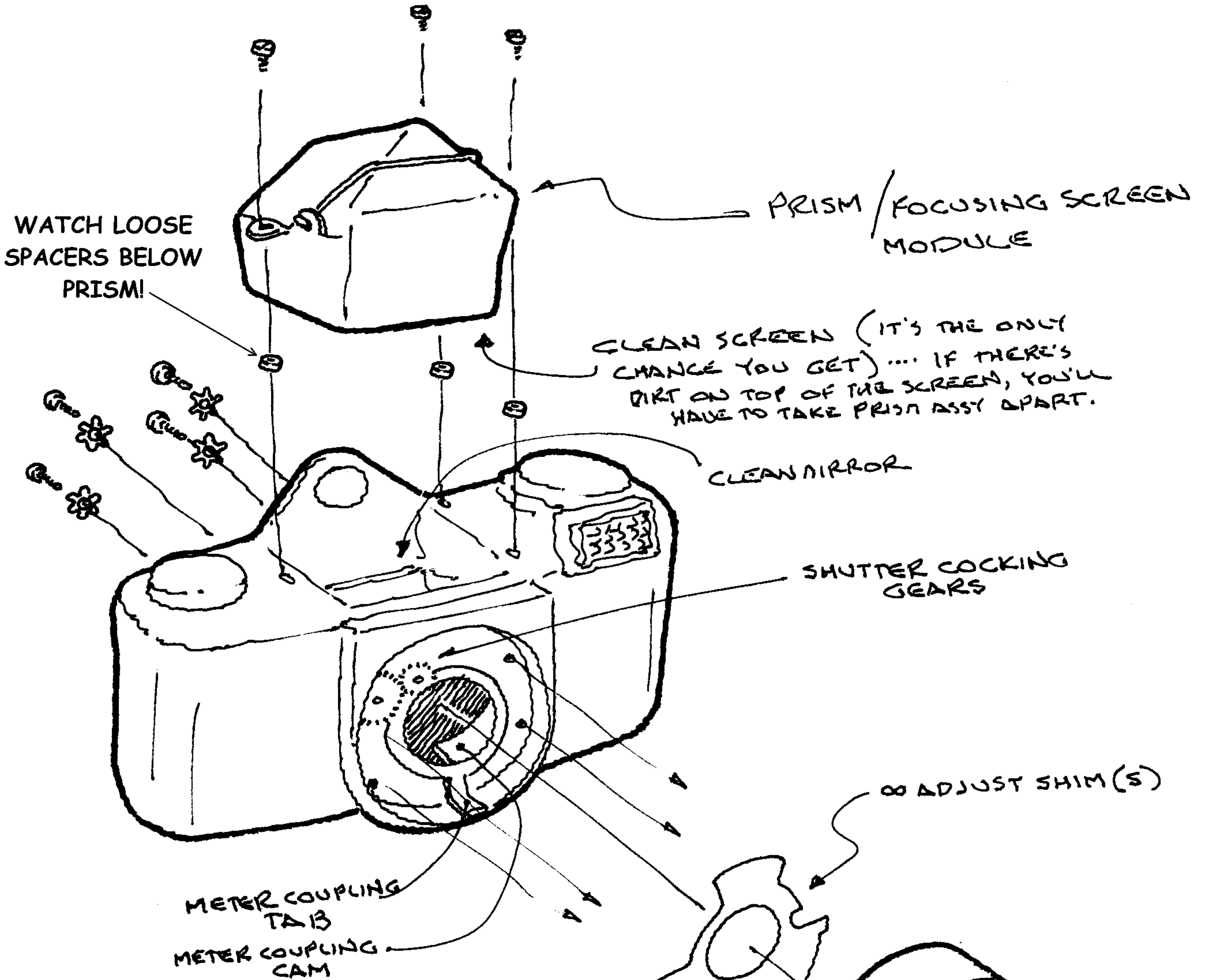
DRIVE GEAR FROM WIND MODULE

FILM TAKEUP SPOOL



# CONTAFLEX PRIMA

1.18.04



## REASSY:

- SET METER COUPLING TAB FULLY CLOCKWISE
- SET SHUTTER TO:
  - > DIN 18
  - > 1/300 SEC
  - > F/22TO ALIGN SLOT WITH TAB
- SET SHUTTER IN PLACE
- CHECK WIND/RELEASE OPERATION
- INSTALL SHUTTER SCREWS

(BOTTOM LEFT SCREW IS OBSTRUCTED BY METER LINKAGE, BUT CAN BE REACHED)

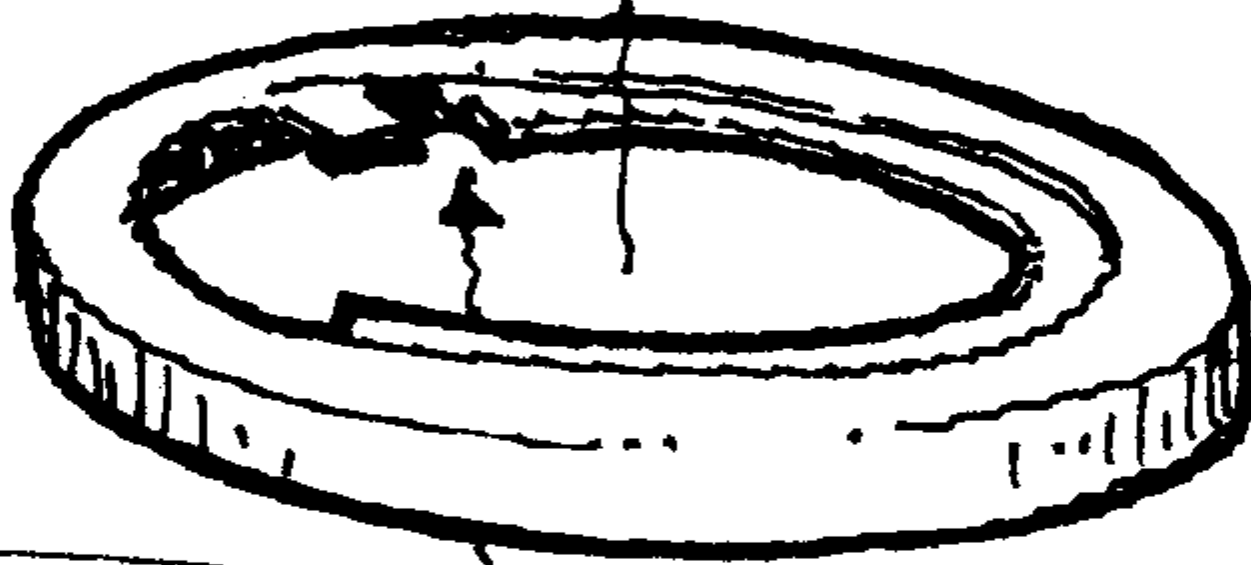
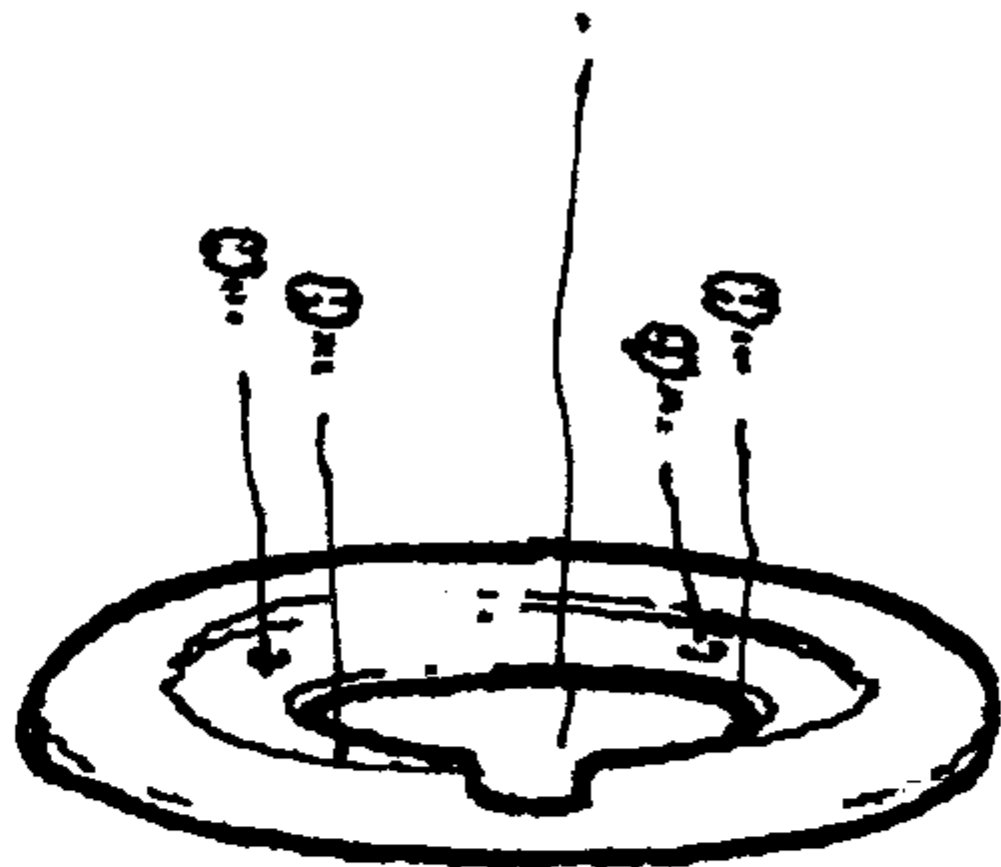
**NOTE:**

BEFORE DISASSY, NOTE APERTURE, SS, ASA & POSITION OF INDEX MARK ON COUPLING RING. MARK POSITION OF LIGHT METER INDEX ON TOP COVER.

- SET ALL THESE TO SAME POSITIONS @ REASSY.
- AFTER REASSY MAKE SURE ALL APERTURES CAN BE SET (MAY BE LIMITED @ SOME ASA SETTINGS)

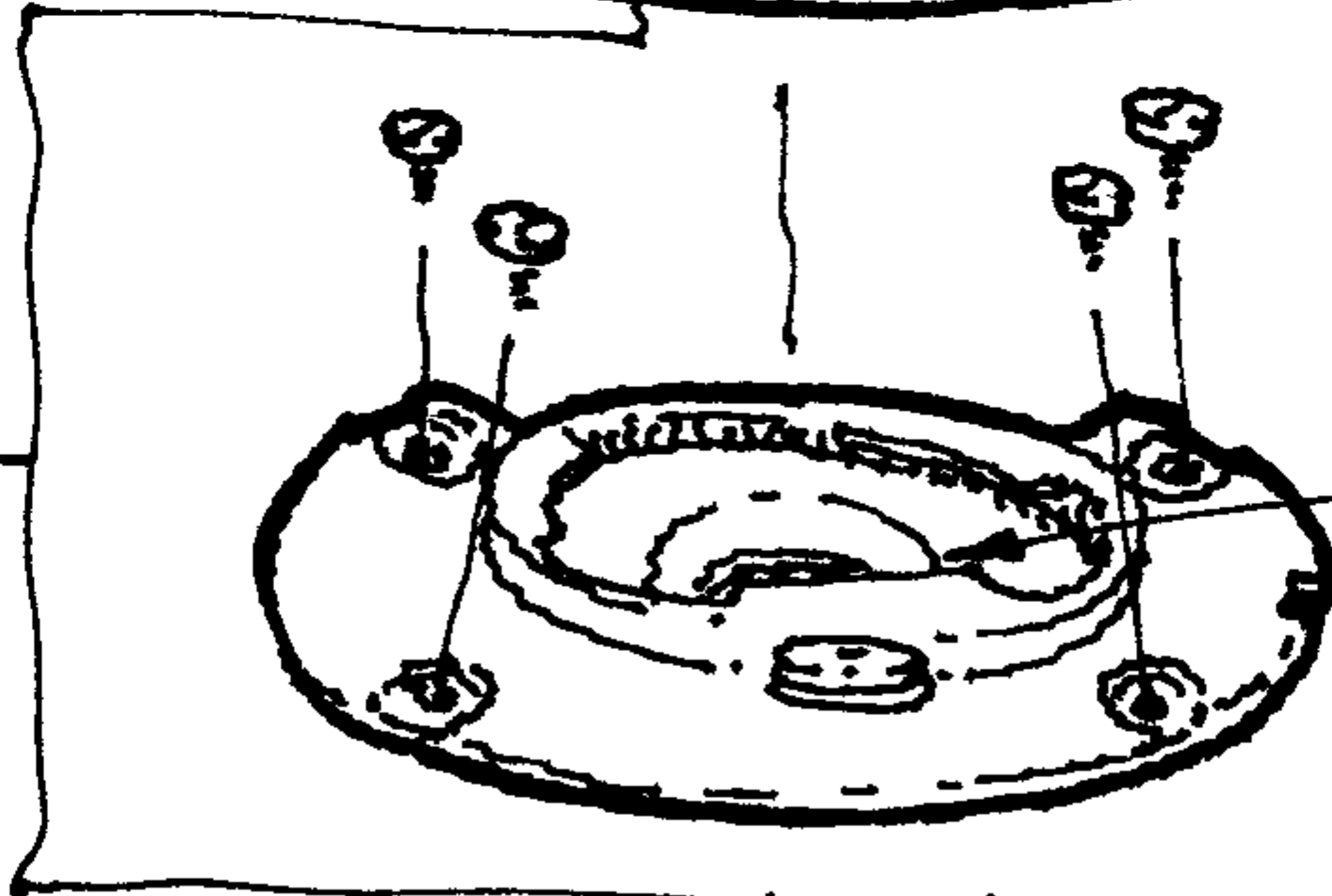
CONTAFLEX  
PRIMA

9.25.02



SS RING  
(SHOWN AT 1/300 POS.)

SS COUPLING  
TAB & SLOT

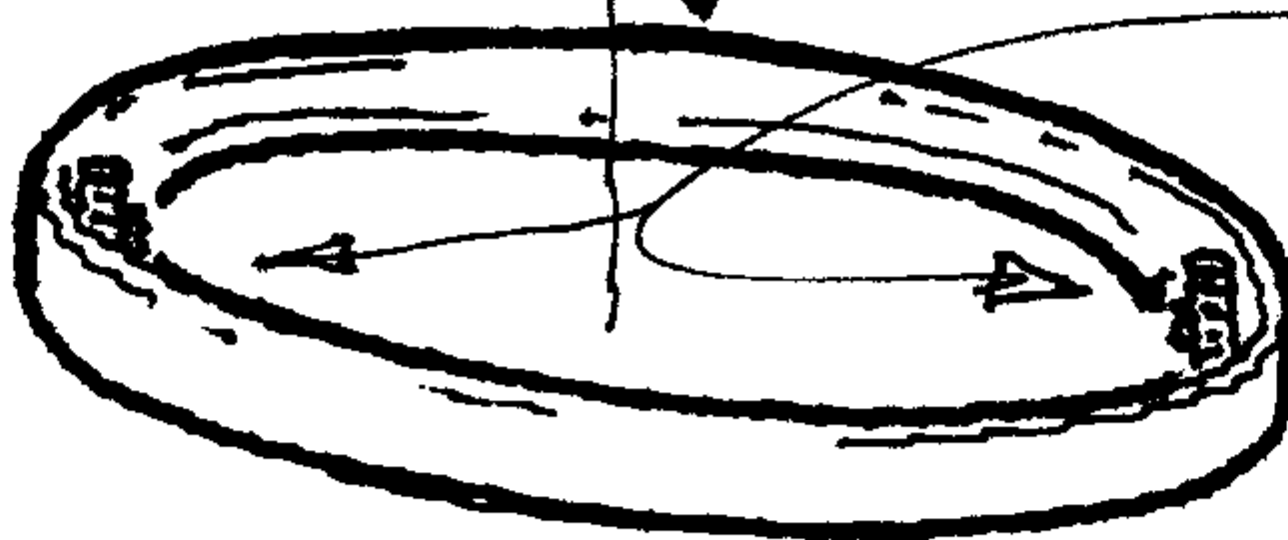


MIDDLE  
LENS  
ELEMENT



SS CAM (SHOWN AT 1 SEC. POS.)

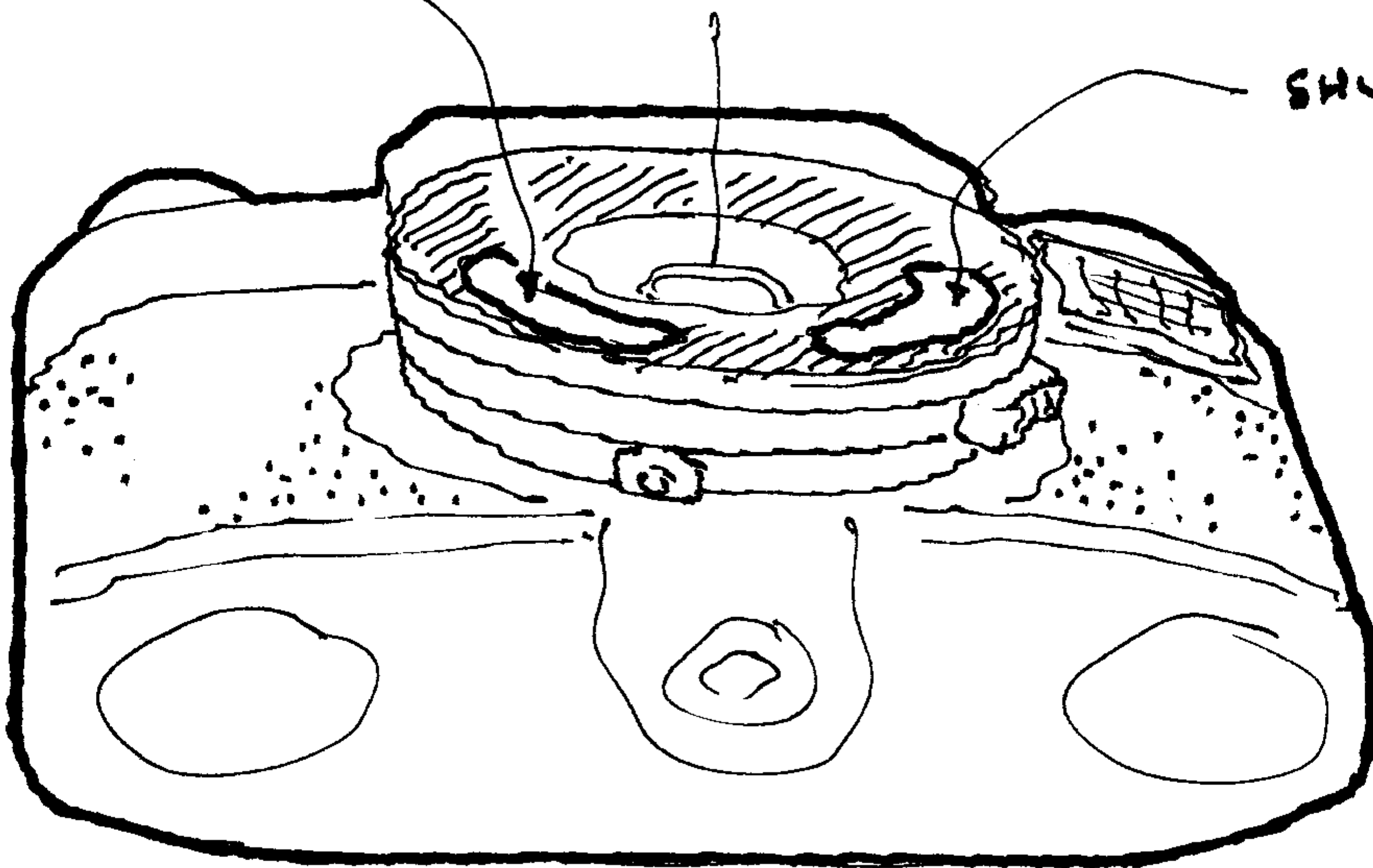
INDEX MARK



SELF TIMER  
GEARS

GEARS COUPLE  
SS & APERTURE  
RINGS TO METER.  
ADJUST @ REASSY.

SHUTTER SPEED  
GEARS



Meter adjust screw: Unscrew cover behind rewind knob (use a piece of masking tape to get a grip)

Mirror stop: Unscrew cover in bottom of chassis, to left of tripod socket

SHUTTER COCKING GEARS



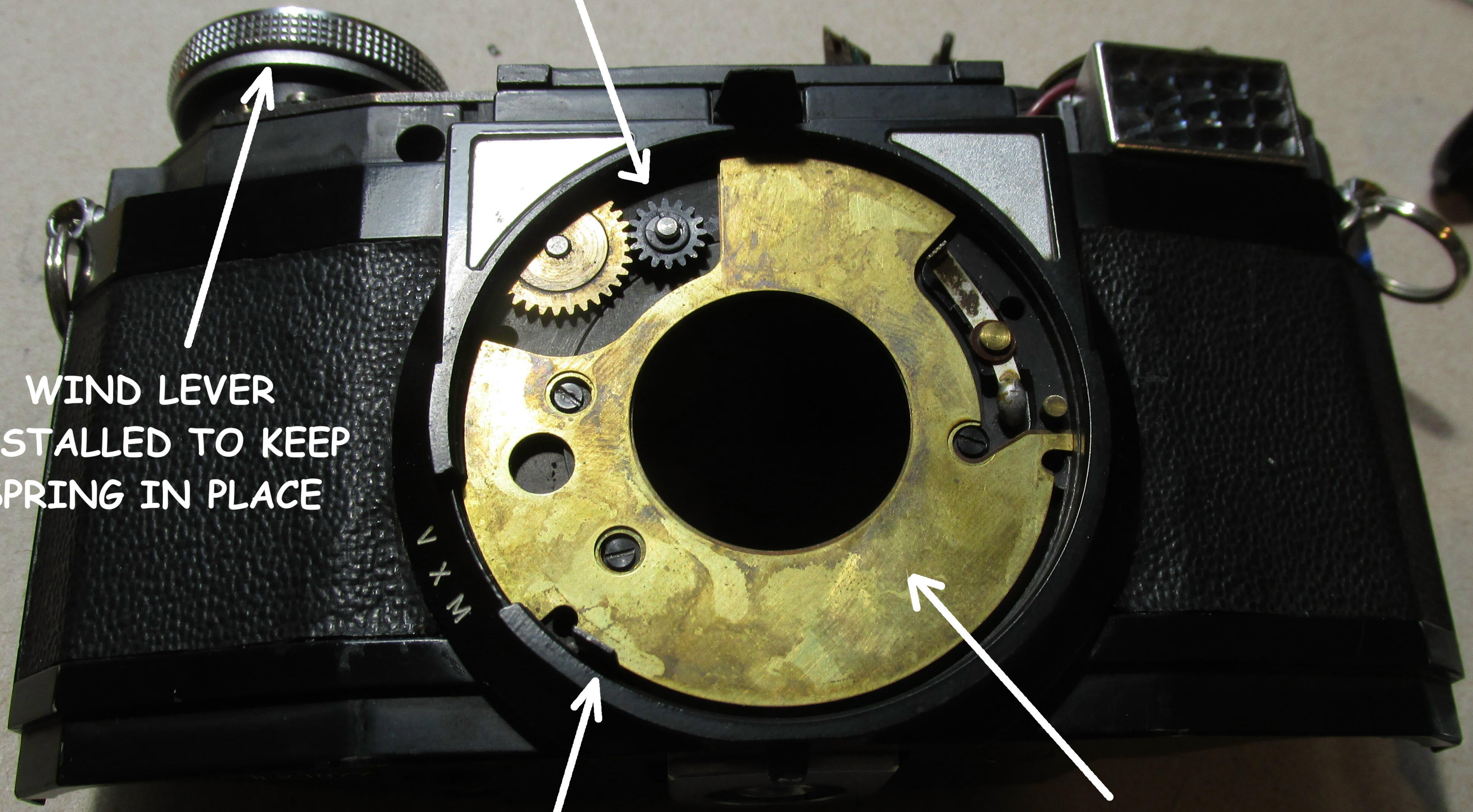
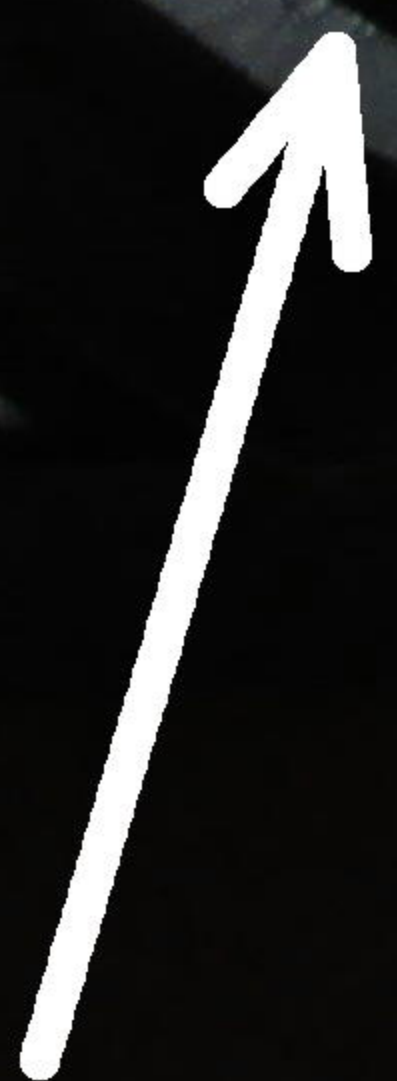
WIND LEVER  
INSTALLED TO KEEP  
SPRING IN PLACE



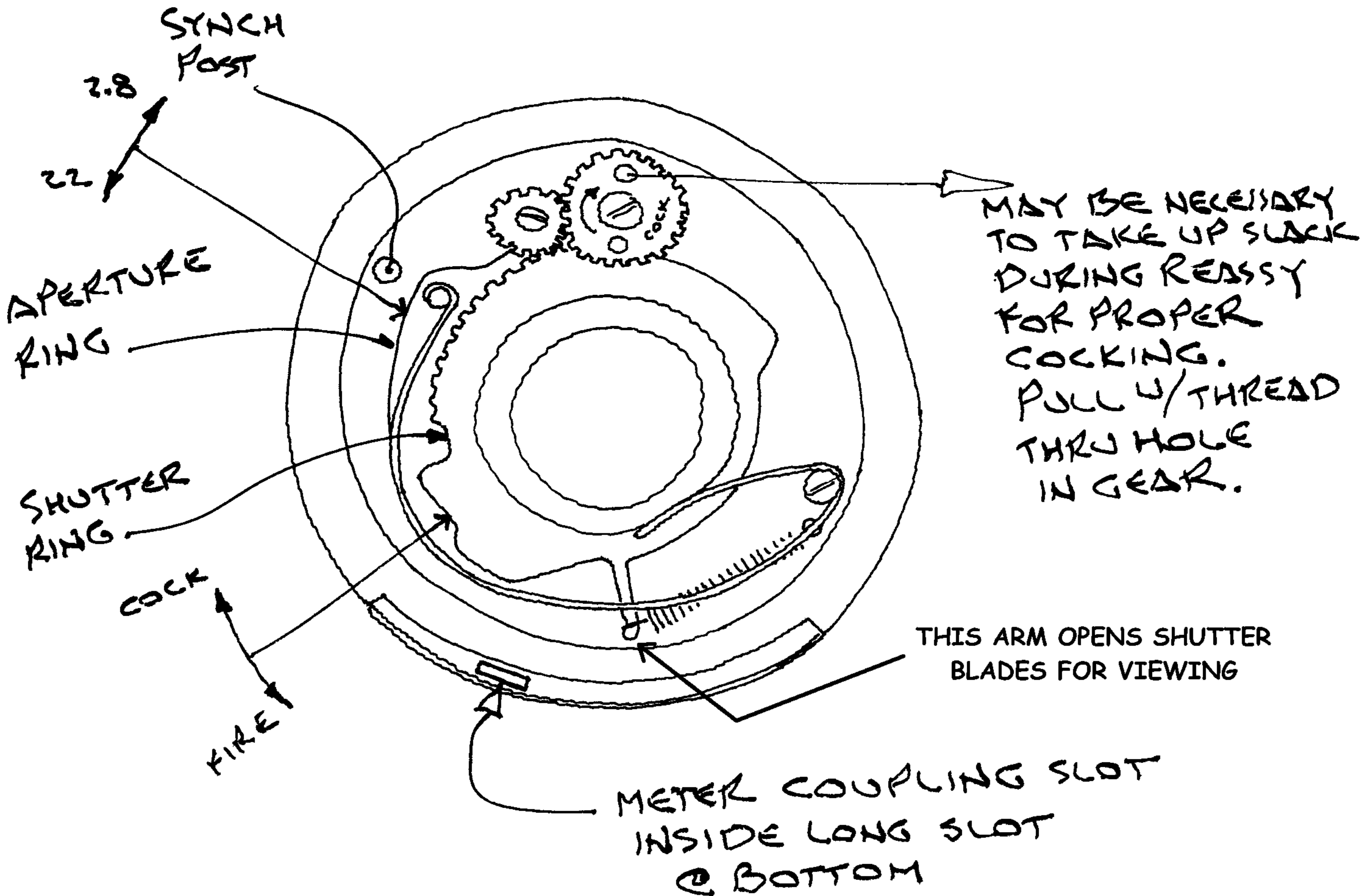
SPACER SHIMS



METER COUPLING TAB



# Contaflex Prima rear shutter linkages



NOTHING HOLDS SHUTTER IN  
COCKED POSITION; IT STAYS  
COCKED ONLY BECAUSE COCKING  
GEARS IN BODY ARE LOCKED UP.

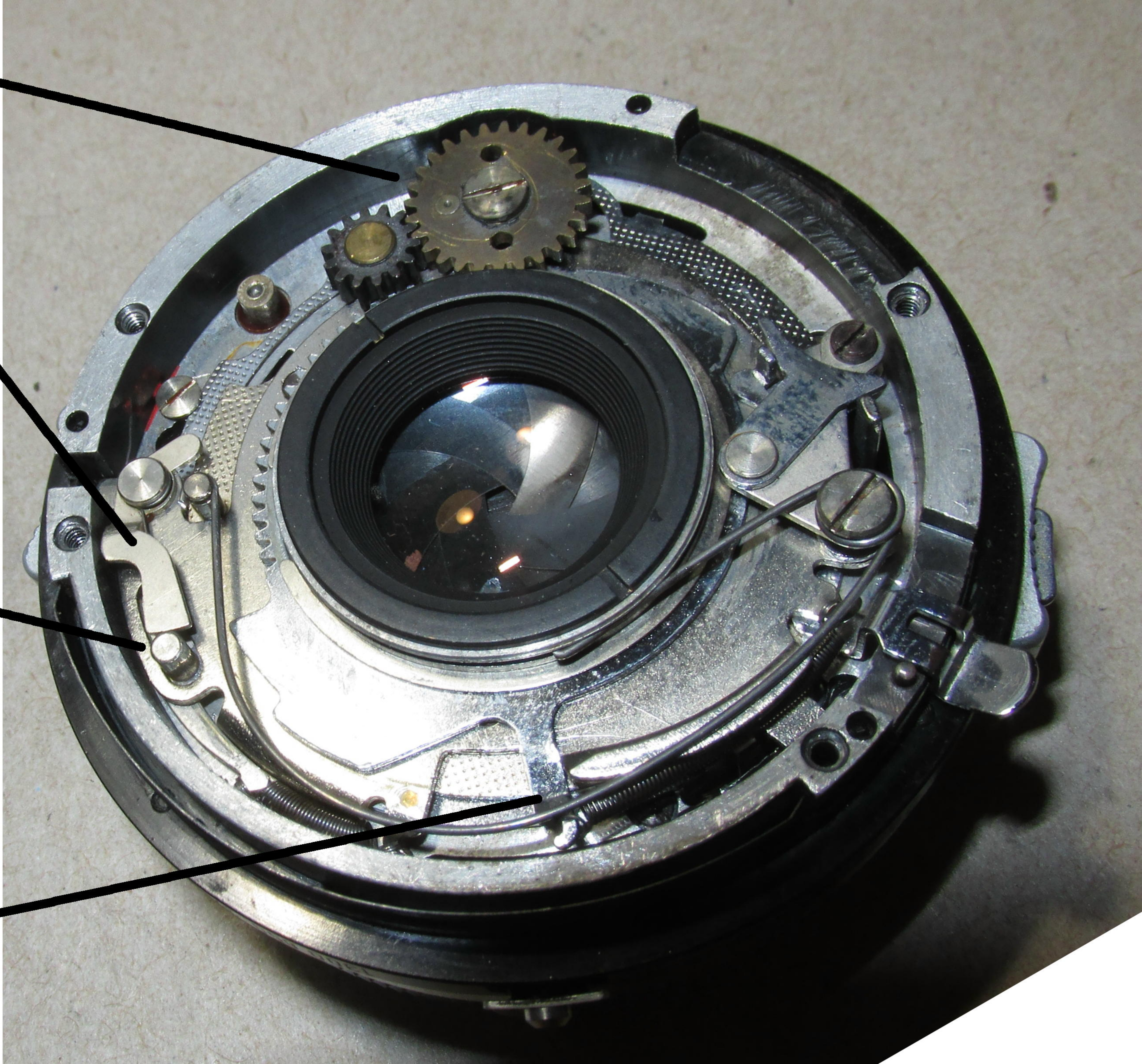
SHUTTER RELEASE SIMPLY (?)  
RELEASES COCKING GEARS SO  
THE SHUTTER RING IS FREE TO  
TURN CCW, ACTUATING SHUTTER.

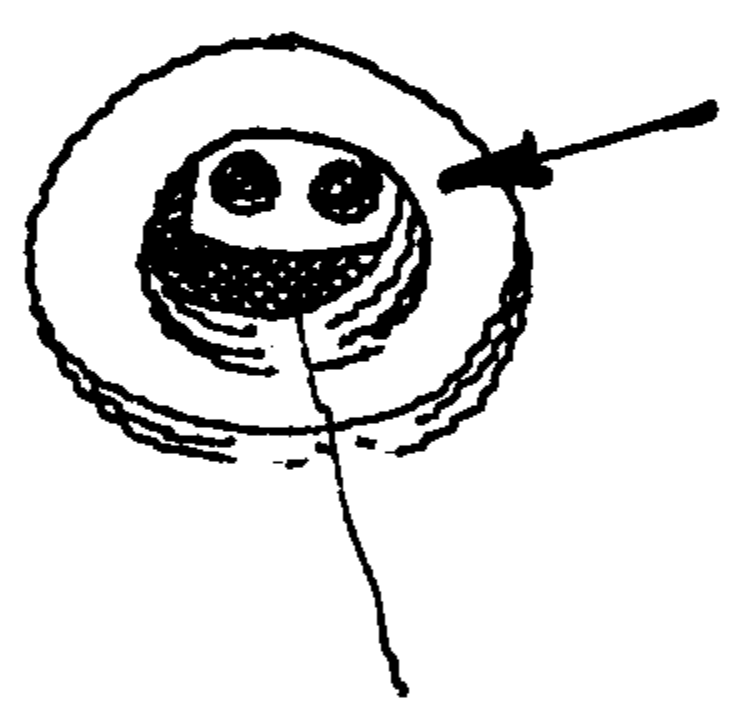
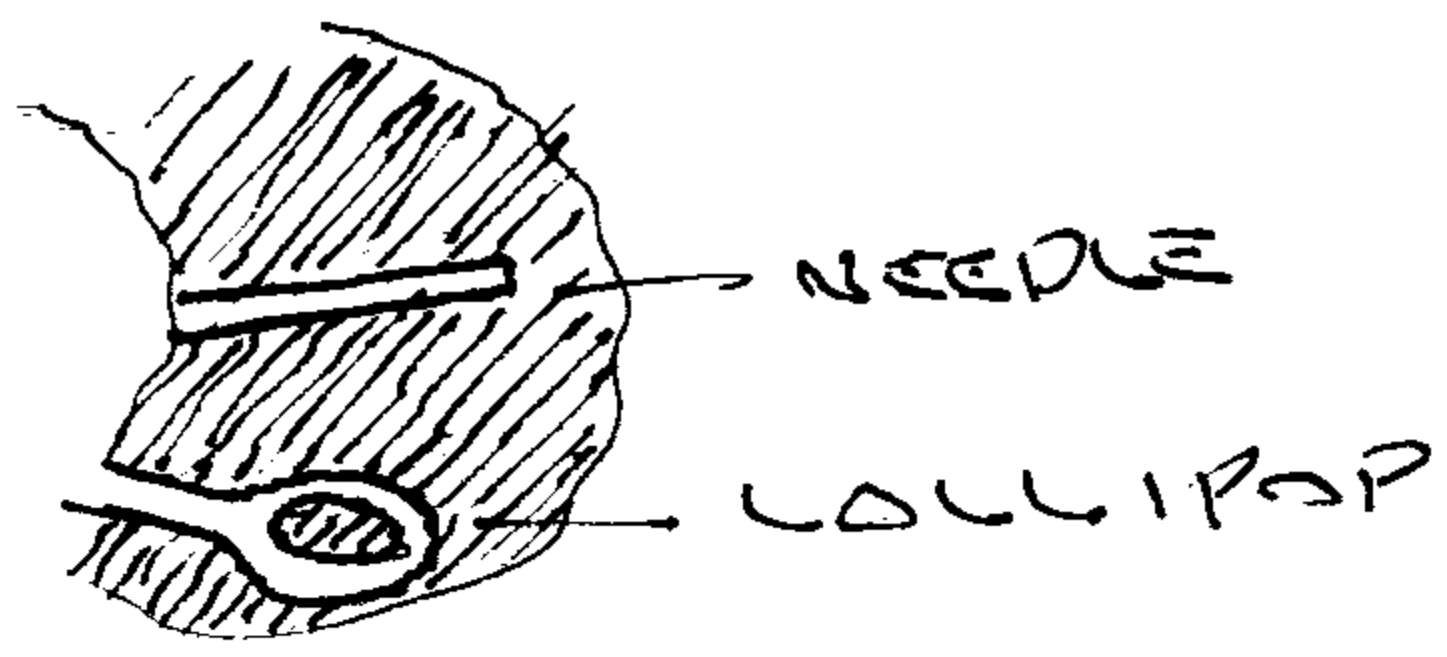
SHUTTER COCKING GEARS

ARM LOCKS SHUTTER BLADES  
CLOSED DURING MIRROR RISE

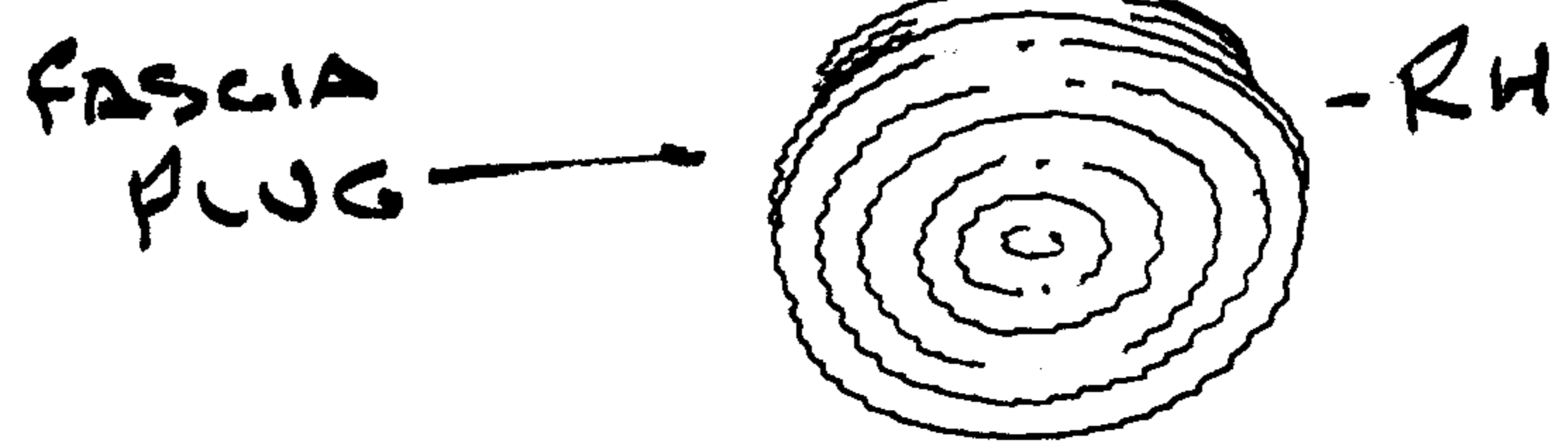
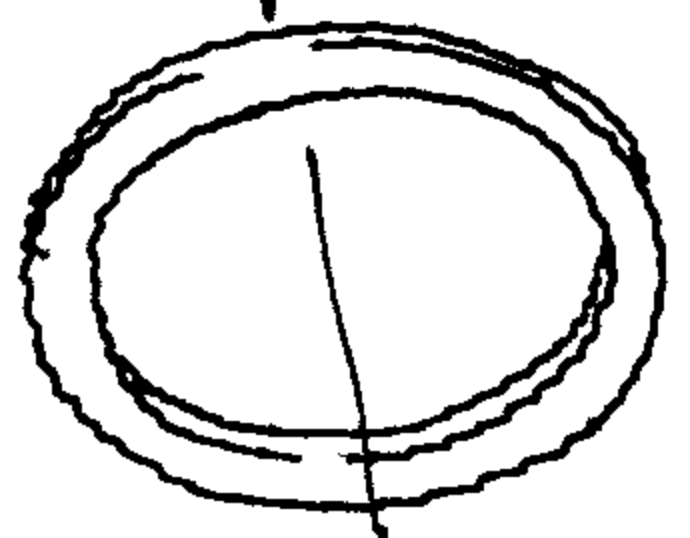
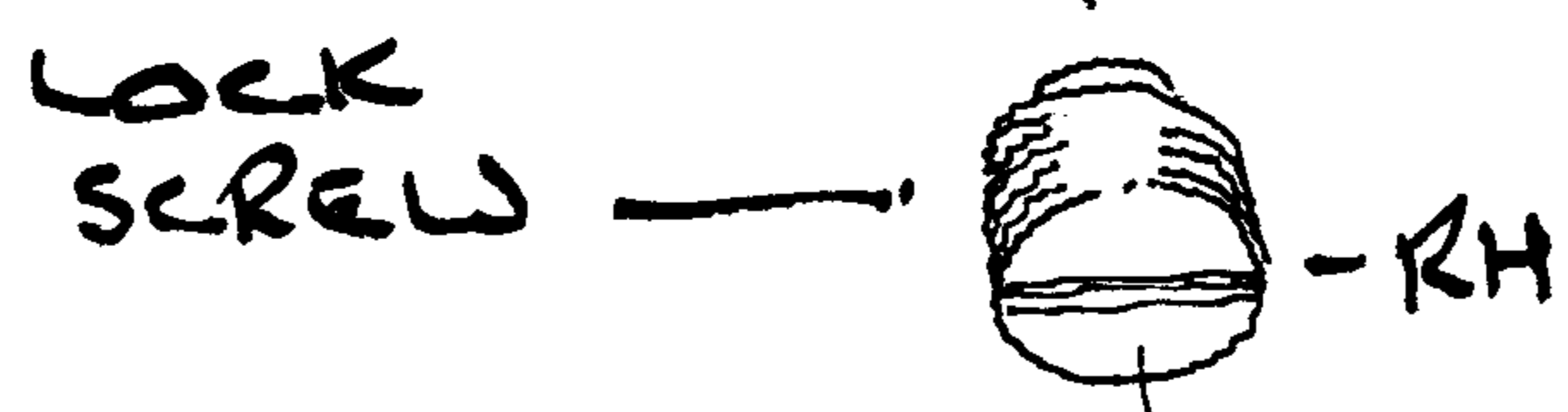
SHUTTER BLADE OPENING PIN

THIS ARM OPENS SHUTTER BLADES  
FOR VIEWING WHEN COCKED





REACH IN WITH A POINTY THING & PUSH THIS THING LEFT OR RIGHT TO MOVE METER NEEDLE.  
- NOT A LOT OF ADJUSTMENT, MAYBE 1 STOP.



CONTRAFLEX PRIMA METER ADJUST -  
ON BACK, JUST BELOW REWIND KNOB.  
- USE MASKING TAPE TO GRIP & UNSCREW  
CHROME FASCIA PLUG.

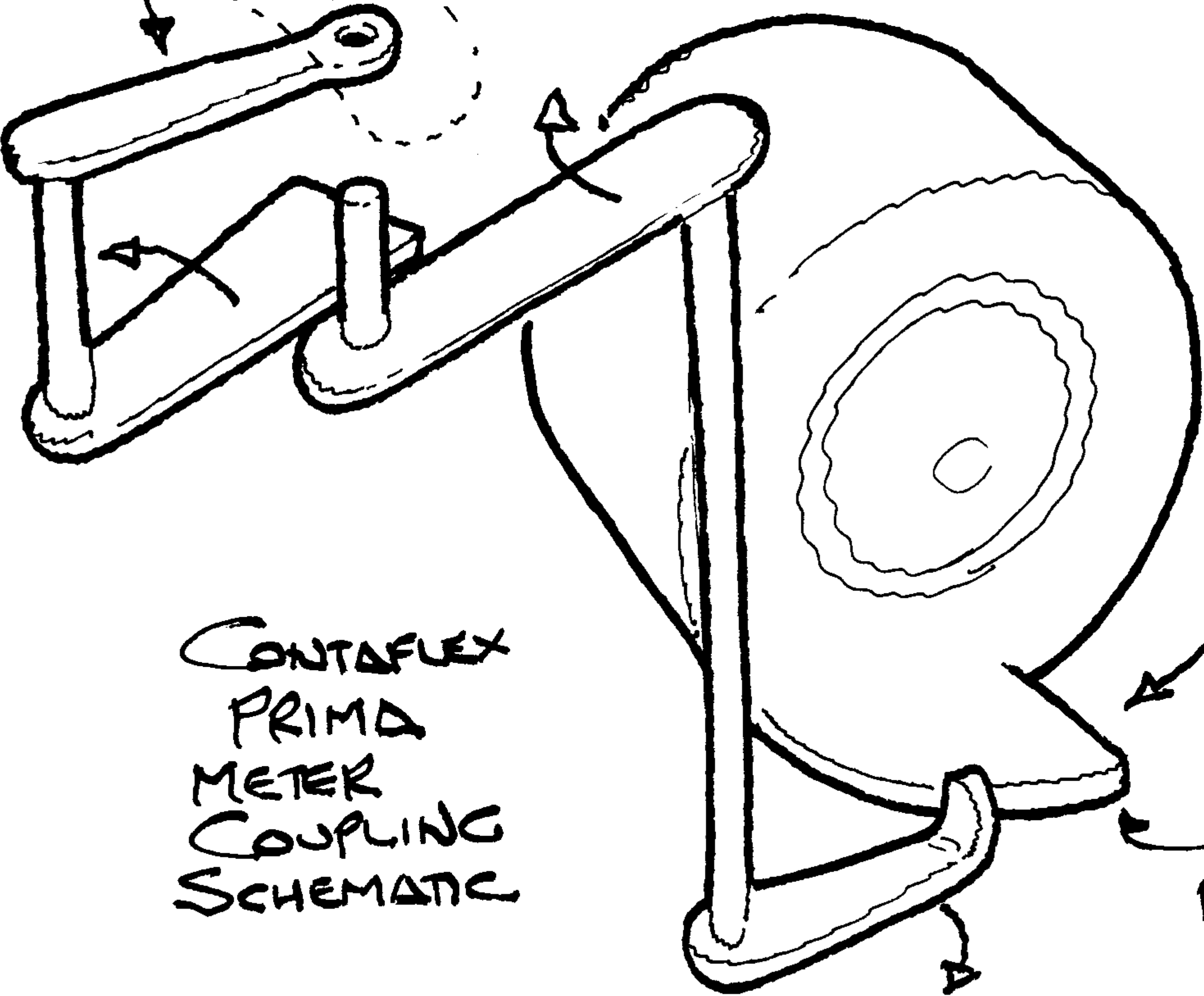
4.3.03

METER  
LALLIPOP

LENS

CAM @  
REAR OF LENS

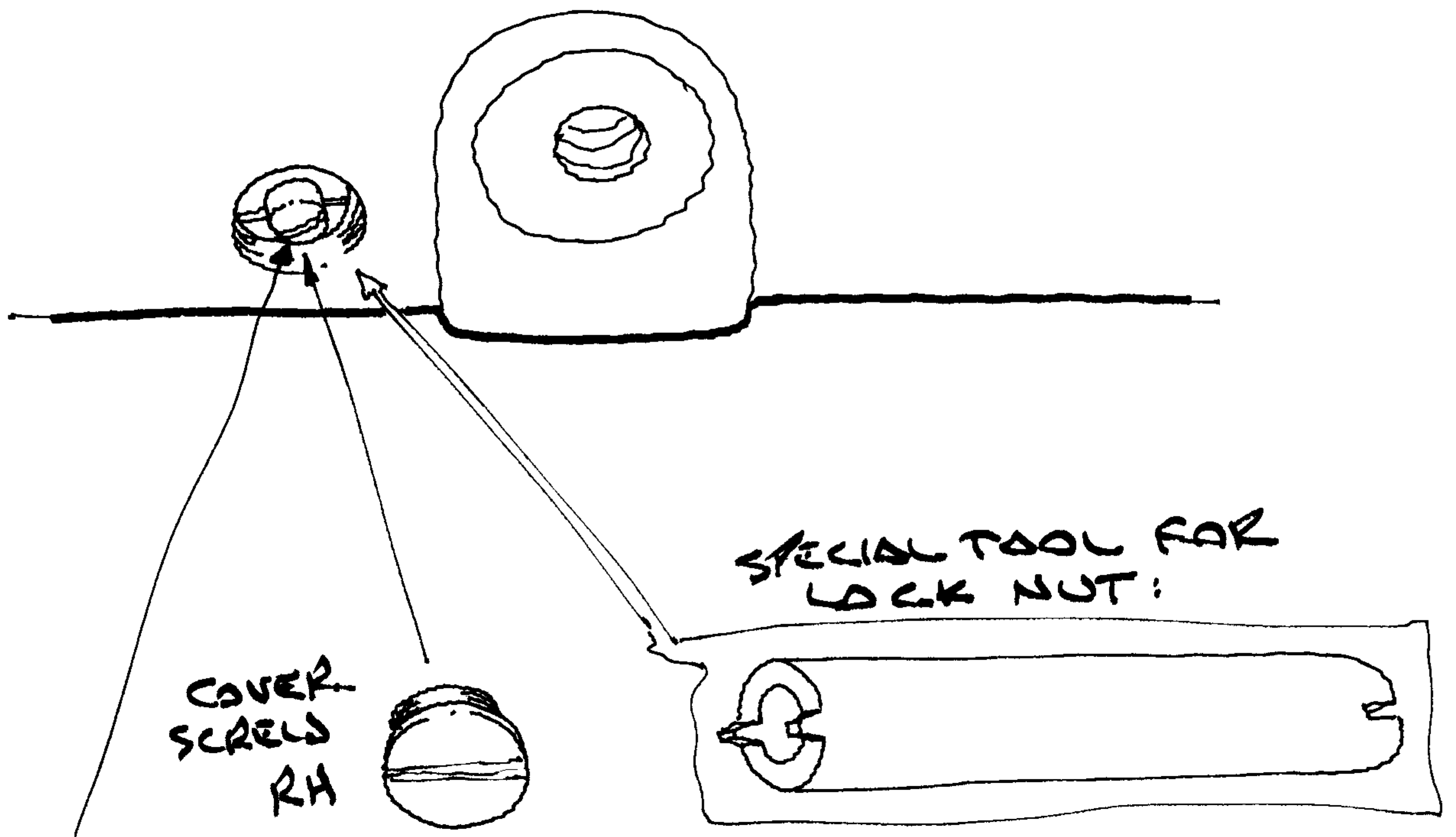
CONTAFLEX  
PRIMA  
METER  
COUPLING  
SCHEMATIC



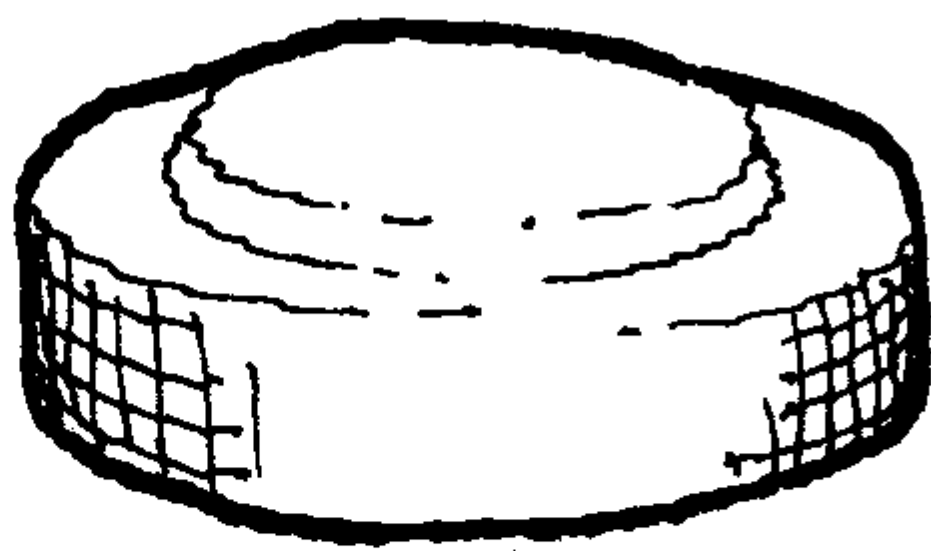
4.3.03

# CONTOFLEX AR110 MIRROR POSITION ADJUST

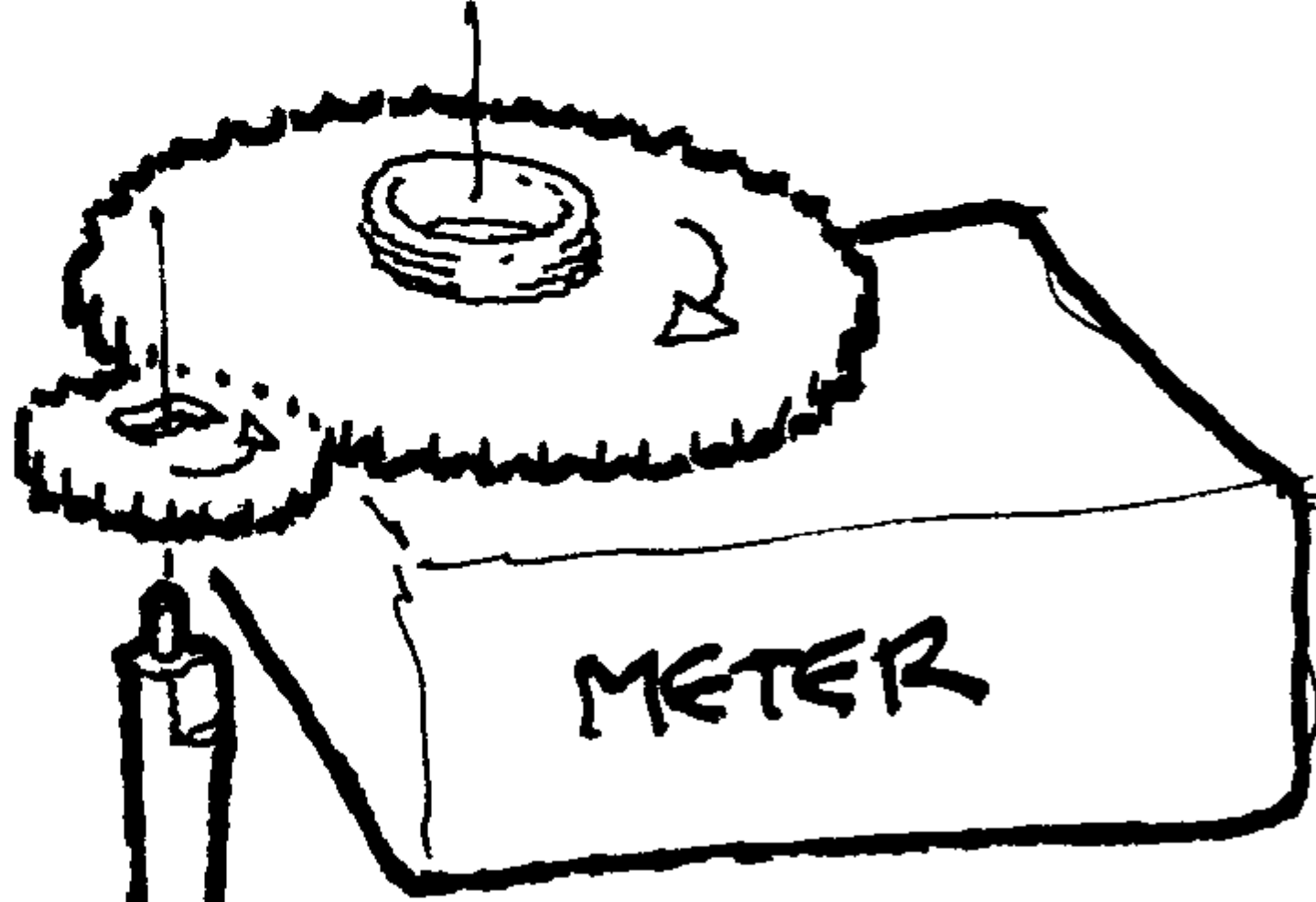
(NEXT TO TRIPOD SOCKET)



TURN SCREW CLOCKWISE  
TO RAISE MIRROR  
(DECREASE DISTANCE SCALE #)  
COUNTERCLOCKWISE TO LOWER IT  
(INCREASE DISTANCE SCALE #)



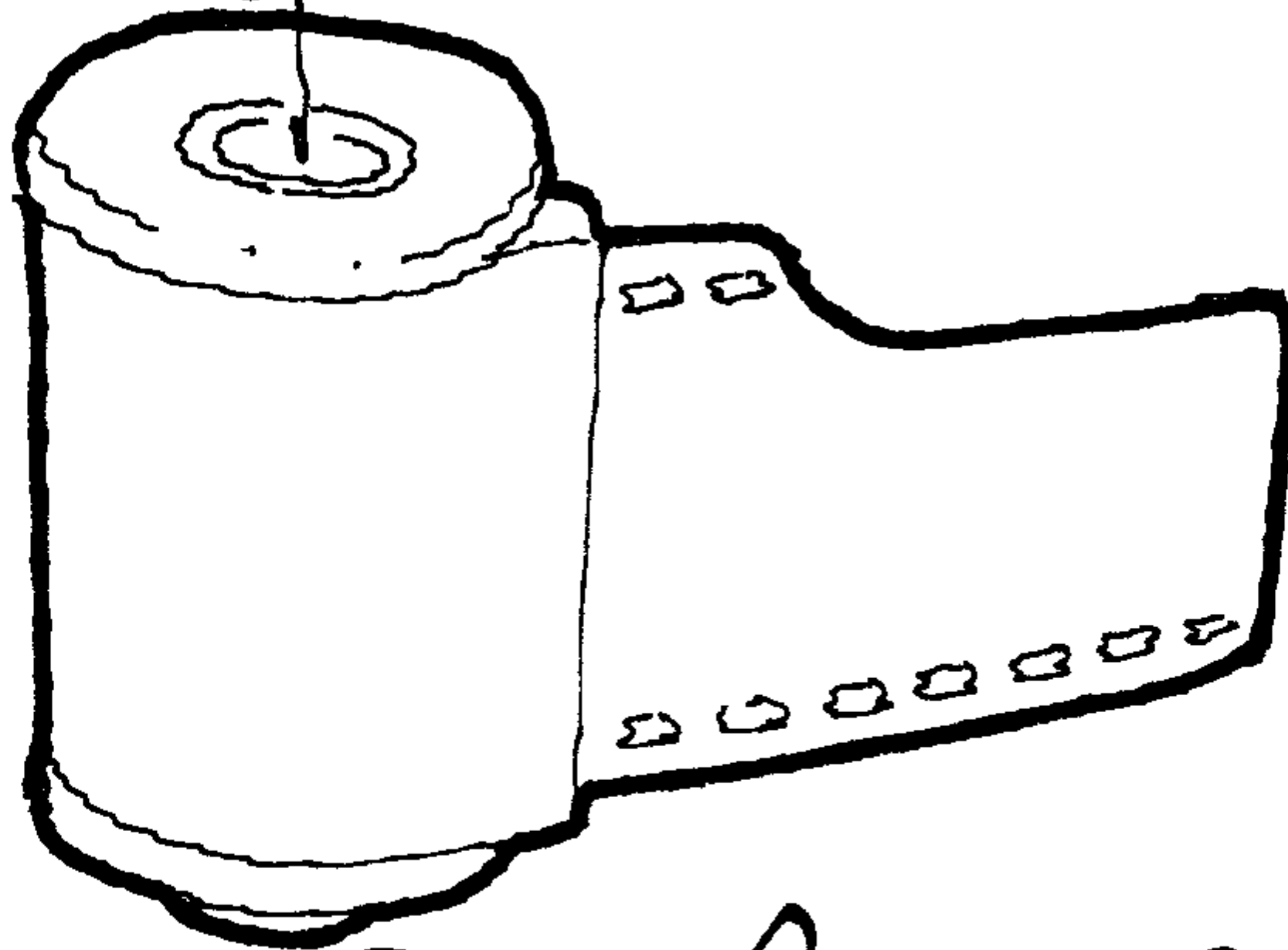
REWIND KNOB



METER



REWIND SHAFT  
(TURNS SLIGHTLY  
FASTER THAN KNOB)



CONTAFLEX PRIMA REWIND

# CONTAFLEX PRIMA WITH METER REMOVED



DO NOT LEAVE  
WIND SPRING  
EXPOSED LIKE THIS!  
REPLACE WIND LEVER  
DURING SERVICE