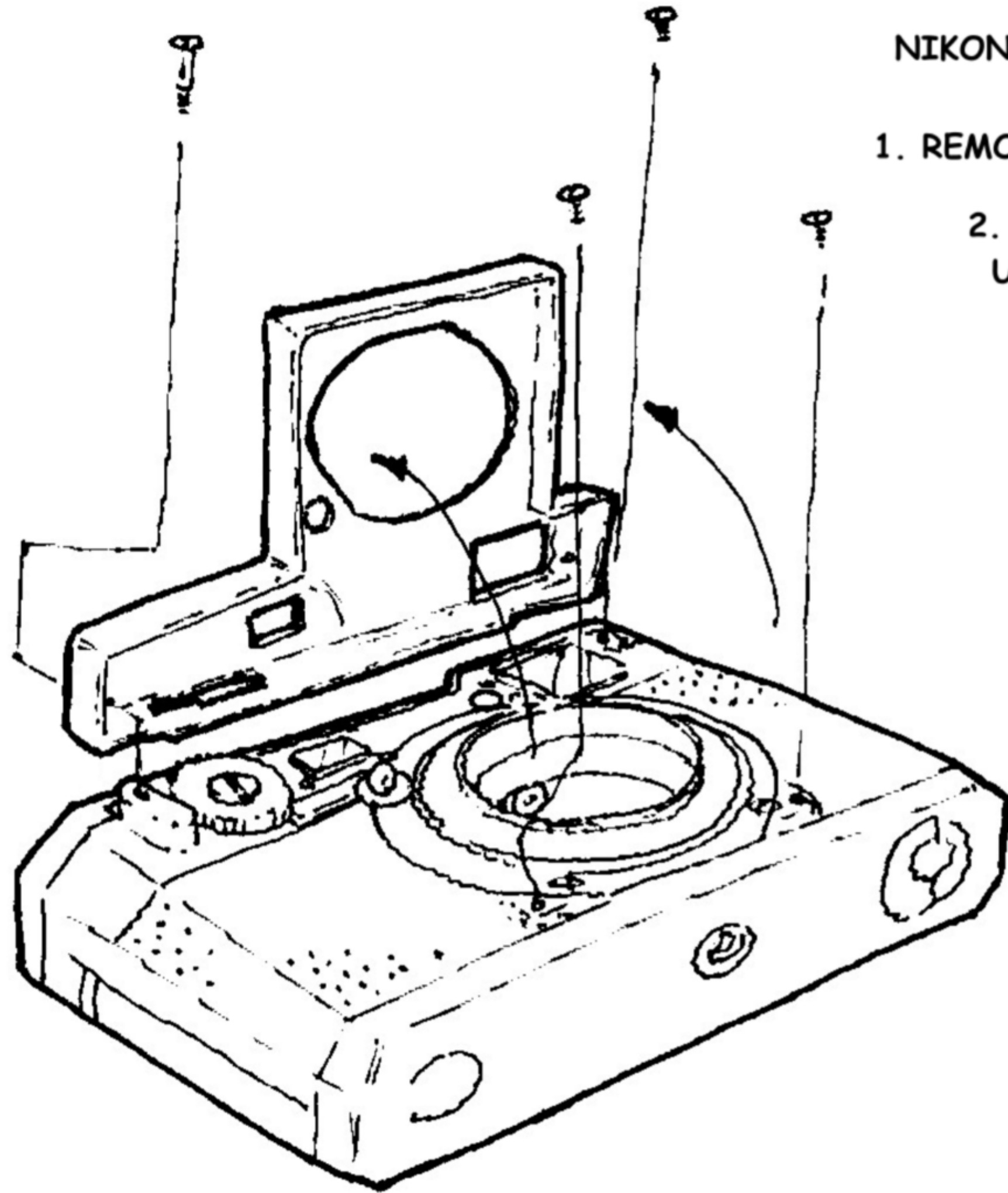


NIKON S2

4-20-2021

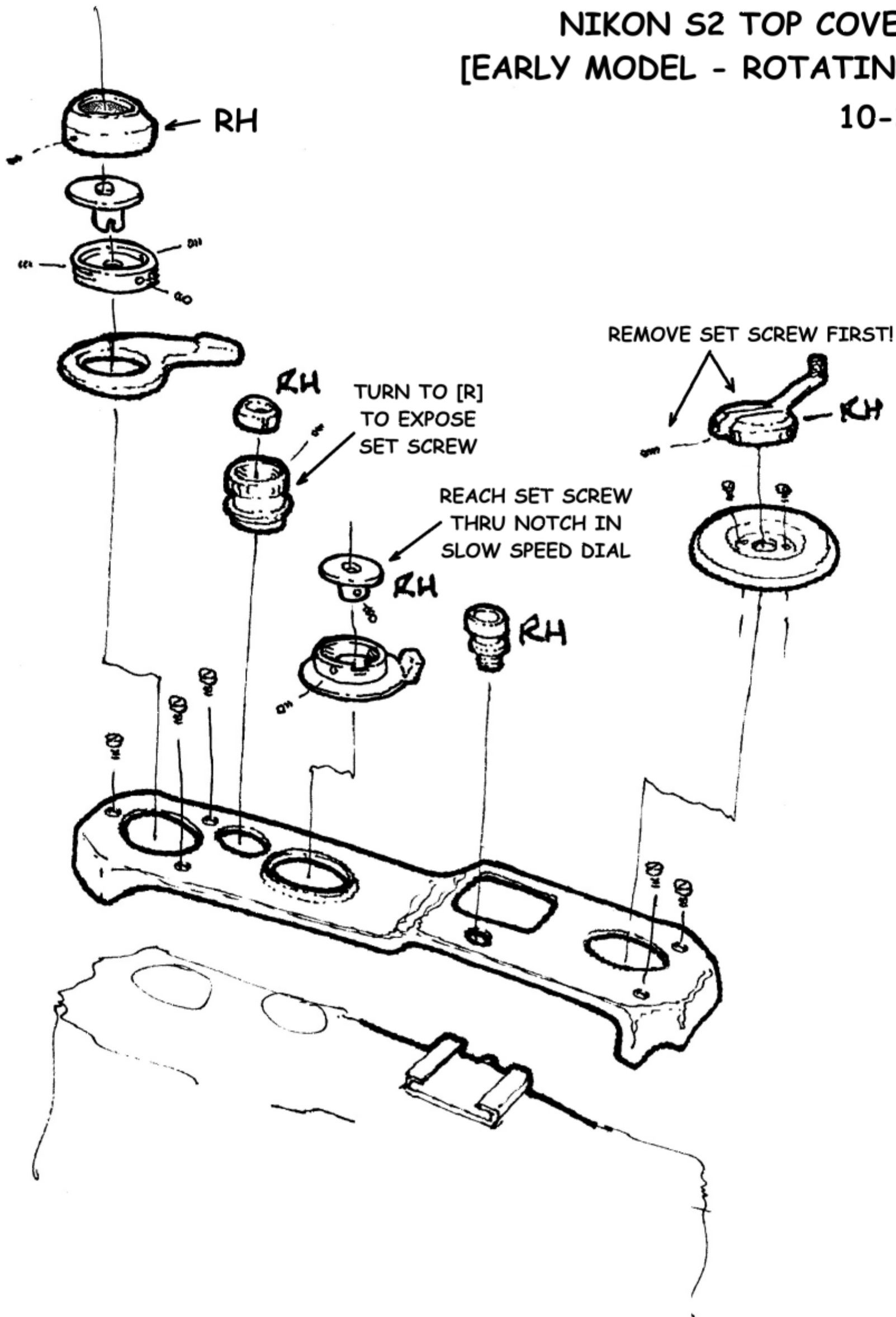
1. REMOVE 4 SCREWS AS SHOWN

2. GENTLY PIVOT CHROME  
UPWARDS, GUIDE SLOT  
PAST FINGER WHEEL  
AND LIFT OFF

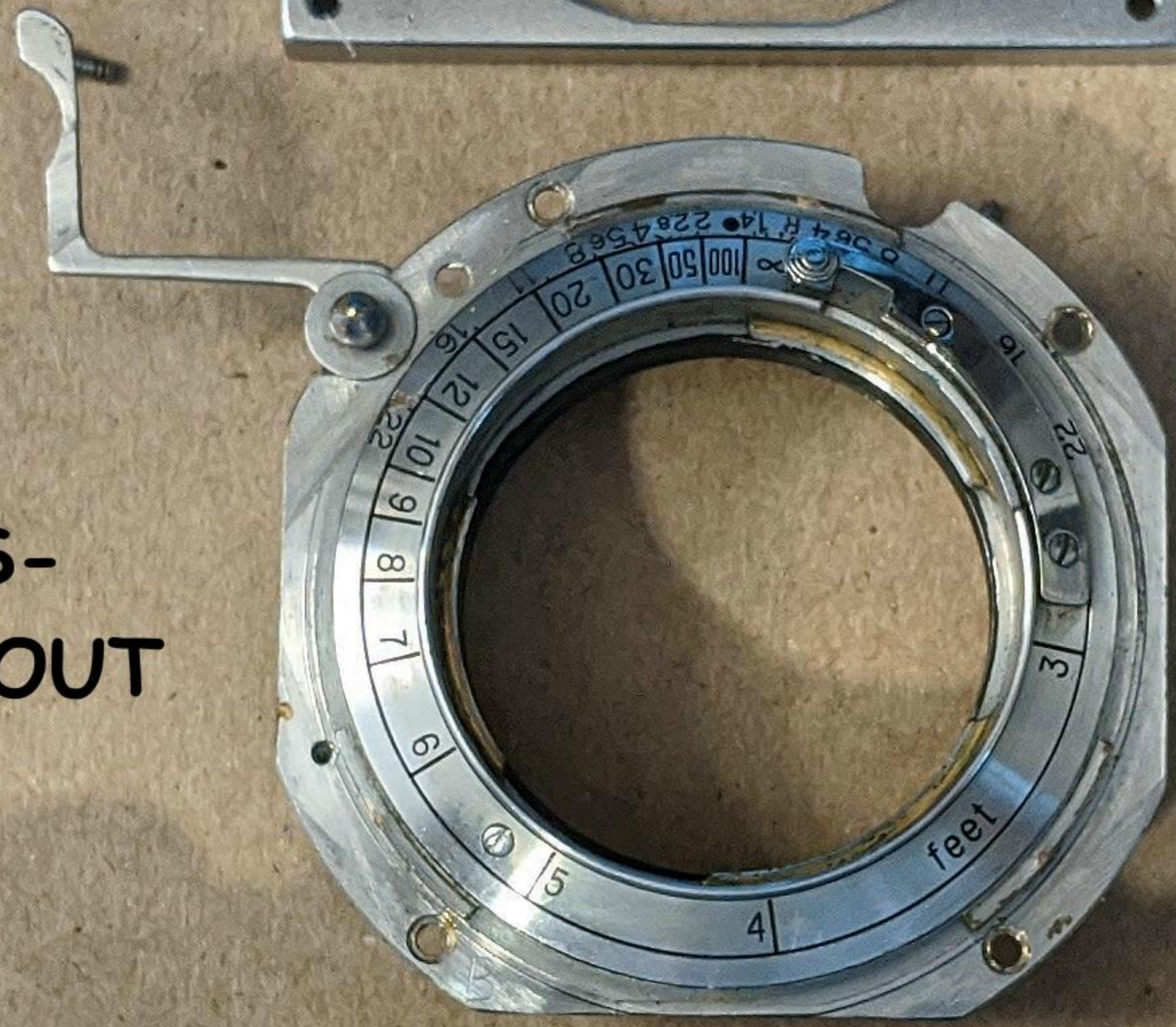


# NIKON S2 TOP COVER [EARLY MODEL - ROTATING DIAL]

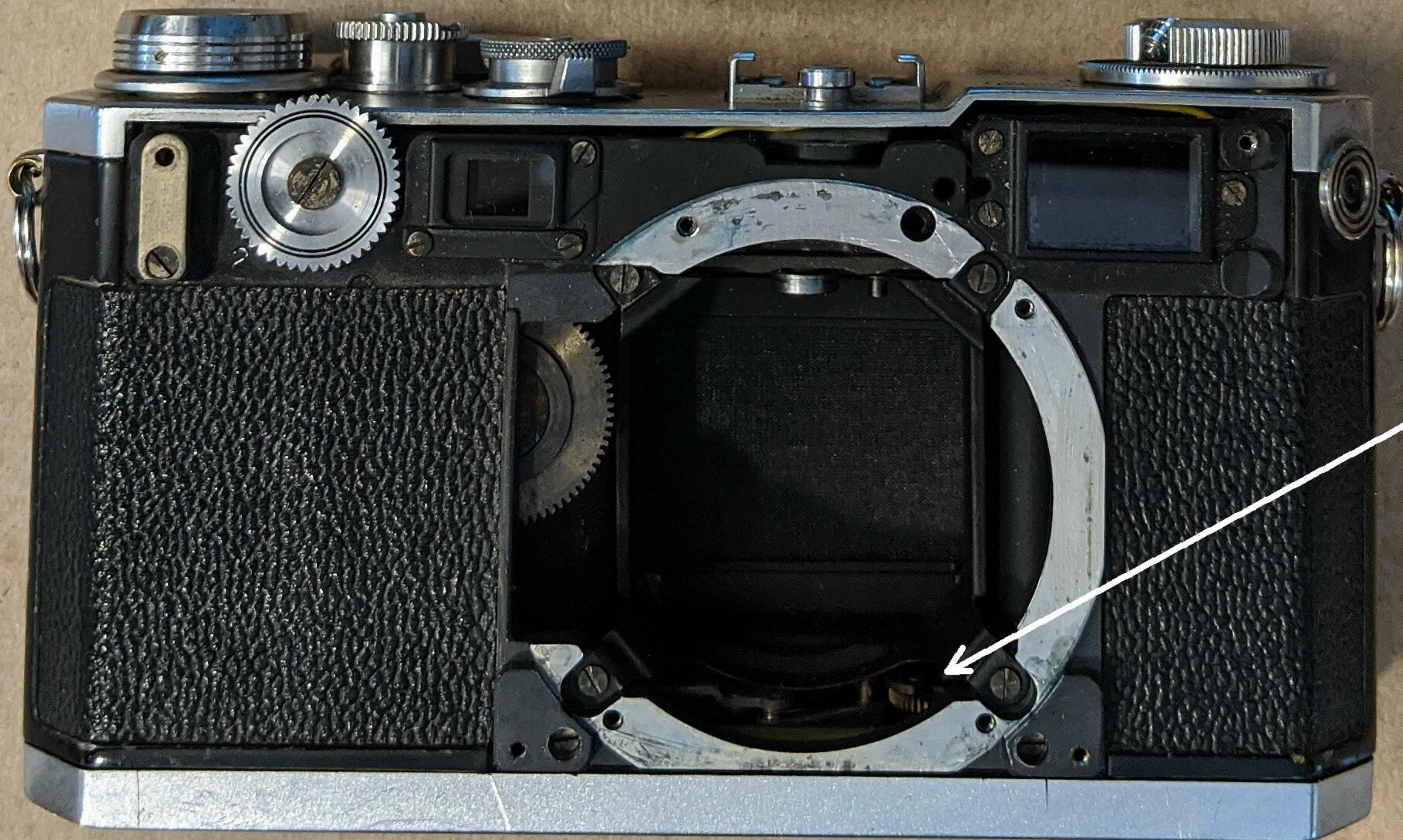
10-29-2022







REMOVE 4 SCREWS-  
LENS MOUNT LIFTS OUT



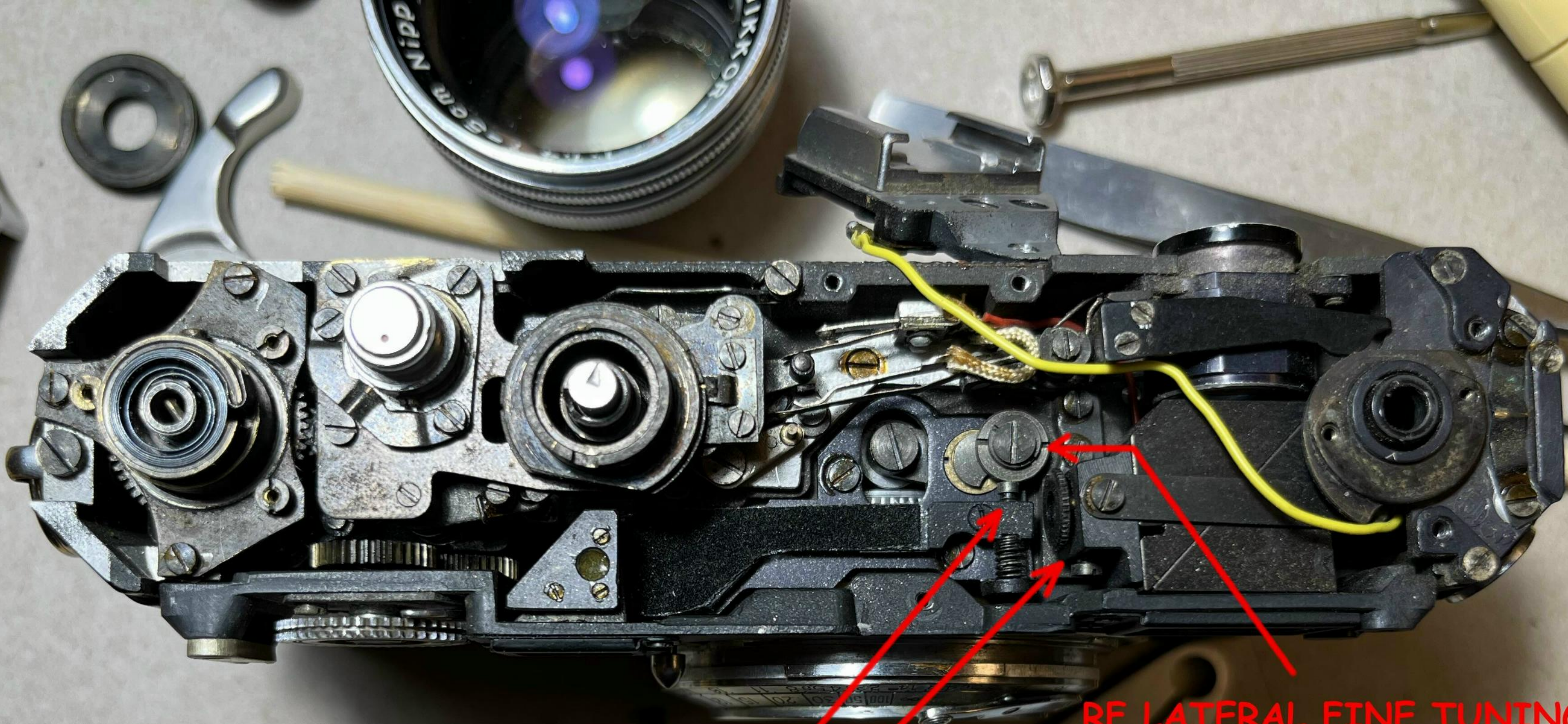
ESCAPEMENT  
ACCESSIBLE  
FOR CLEANING





**INFINITY STOP**

**FOCUS LATCH**



RF LATERAL ADJUST

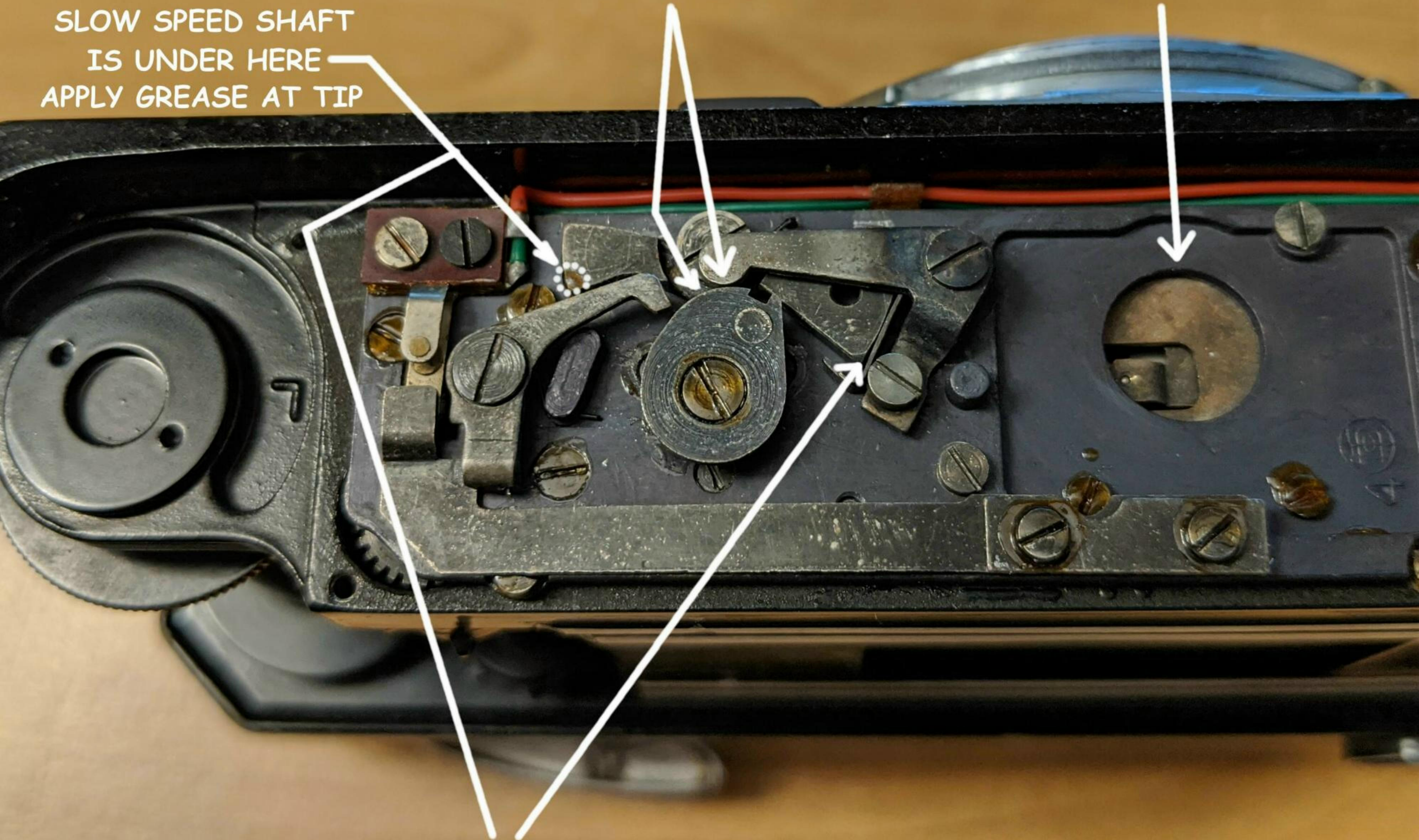
RF VERTICAL ADJUST

RF LATERAL FINE TUNING CAM

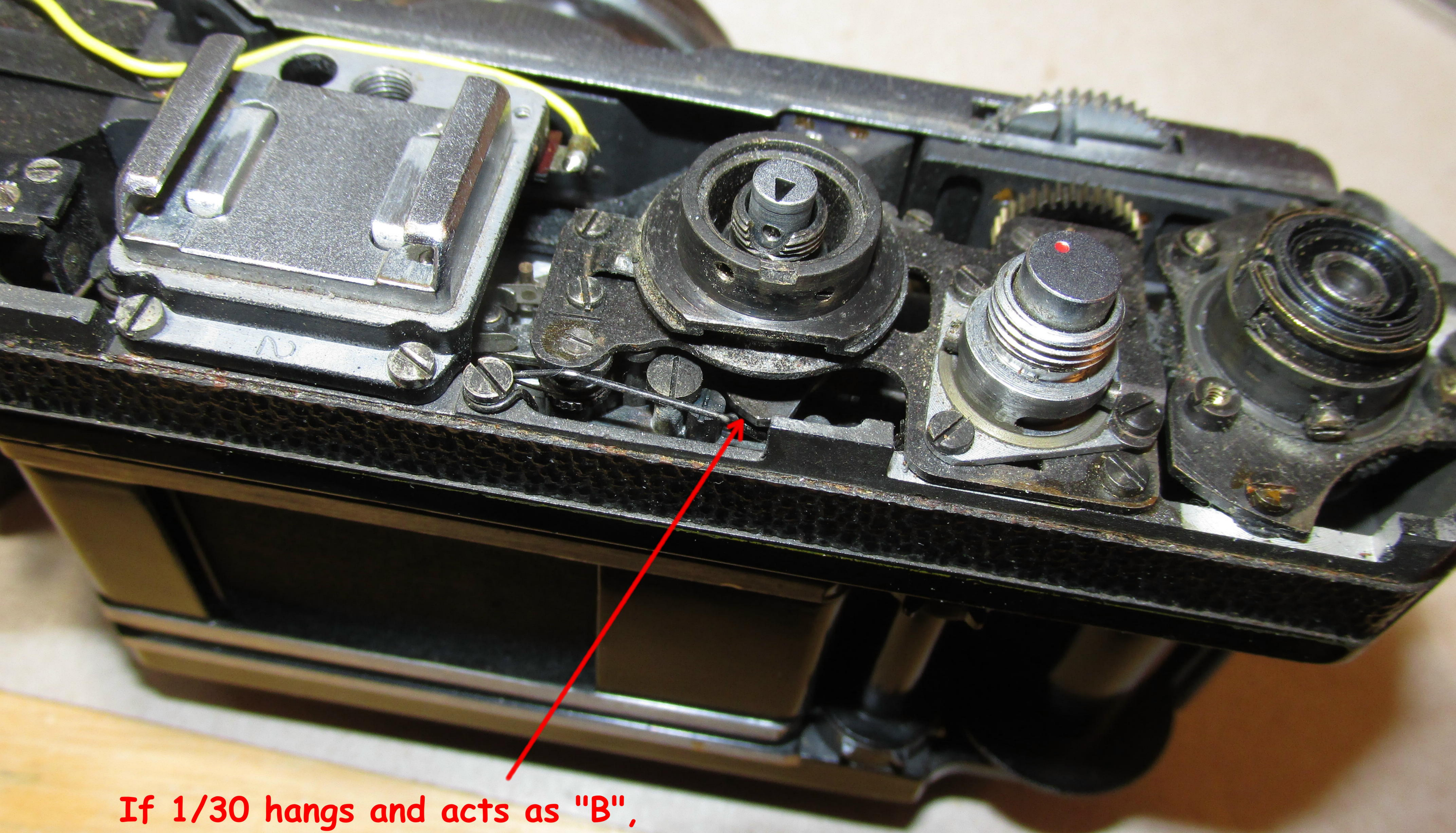
IF 30 ACTS AS B,  
GREASE HERE

CLEAN ESCAPEMENT  
THROUGH THIS HOLE

SLOW SPEED SHAFT  
IS UNDER HERE  
APPLY GREASE AT TIP



IF 30 WORKS BUT SLOW SPEEDS HANG UP,  
CLEAN & LUBE HERE



If 1/30 hangs and acts as "B",  
clean and lubricate this cam face  
with light silicone grease  
(shown stopped just short of end of travel)